

## Zuivel bocht 90°

Bend 90°

DS, SMS, DIN 11852, ISO, EN-3D

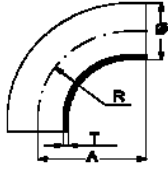
EN 10204 3.1



Ø mm	Wall	Type	R	A	Art. no.		Kg / pc	4301 4307	4404
					matt	satin G320			
17,20	1,60	DN 10 EN-3D	25	25	DB63	DB60	0,028	●	●
19,00	1,50	DN 15 DIN BS	35	35	DB33	DB30	0,031	● ◎	● ◎
19,00	1,50	DN 15 DIN BL	35	60	DB34	DB31	0,036	●	●
21,30	1,60	DN 15 EN-3D	28	28	DB63	DB60	0,042	● ◎	● ◎
23,00	1,50	DN 20 DIN BS	40	40	DB33	DB30	0,043	● ◎	● ◎
23,00	1,50	DN 20 DIN BL	40	65	DB34	DB31	0,051	●	●
25,00	1,20	1" DS/SMS	32	55		DB10	0,080	◎	◎
25,00	1,20	1" ISO short	38	44		DB20	0,070	◎	◎
25,00	1,20	1" ISO long	38	65		DB21	0,080	●	◎
25,00	1,20	1" ISO lengthened	38	200		DB22	0,120		●
25,00	1,60	1" SWG long	38	65		DB21	0,090		◎
25,40	1,20	1" DIN " inch"	28	28	DB53	DB50	0,030	● ◎	● ◎
26,90	1,60	DN 20 EN-3D	29	29	DB63	DB60	0,056	● ◎	● ◎
28,00	1,50	DN 25 DIN BS	50	50	DB33	DB30	0,070	● ◎	● ◎
29,00	1,50	DN 25 DIN BS	50	50	DB33	DB30	0,068	● ◎	● ◎
29,00	1,50	DN 25 DIN BL	50	90	DB34	DB31	0,081	●	●
32,00	1,20	1 1/4" DS/SMS	32	65		DB10	0,100	●	●
33,70	2,00	DN 25 EN-3D	38	38	DB63	DB60	0,095	● ◎	● ◎
35,00	1,50	DN 32 DIN BS	55	55	DB33	DB30	0,100	● ◎	● ◎
35,00	1,50	DN 32 DIN BL	55	95	DB34	DB31	0,109	●	●
38,00	1,20	1 1/2" DS/SMS	45	70		DB10	0,150	◎	◎
38,00	1,20	1 1/2" ISO short	57	64		DB20	0,130	◎	◎
38,00	1,20	1 1/2" ISO long	57	85		DB21	0,150	◎	◎
38,00	1,20	1 1/2" ISO lengthened	57	200		DB22	0,200		●
38,00	1,50	1 1/2" ISO short	57	64		DB20	0,145	◎	◎
38,10	1,50	1 1/2" SWG long	57	85		DB21	0,170		◎
38,10	1,50	1 1/2" DIN " inch"	45	45	DB53	DB50	0,095	● ◎	● ◎
40,00	1,50	DN 40 DIN BS	60	60	DB33	DB30	1,130	● ◎	● ◎
41,00	1,50	DN 40 DIN BS	60	60	DB33	DB30	0,117	● ◎	● ◎
41,00	1,50	DN 40 DIN BL	60	100	DB34	DB31	0,140	●	●
42,40	2,00	DN 32 EN-3D	48	48	DB63	DB60	0,151	● ◎	● ◎
48,30	2,00	DN 40 EN-3D	57	57	DB63	DB60	0,208	● ◎	● ◎
50,80	1,50	2" DIN " inch"	68	68	DB53	DB50	0,190	● ◎	● ◎
50,80	1,60	2" SWG long	77	110		DB21	0,310		◎
51,00	1,20	2" DS/SMS	58	82		DB10	0,260	◎	◎
51,00	1,20	2" ISO short	77	89		DB20	0,270	◎	◎
51,00	1,20	2" ISO long	77	110		DB21	0,290		◎
51,00	1,20	2" ISO lengthened	76	200		DB22	0,330		●
52,00	1,50	DN 50 DIN BS	70	70	DB33	DB30	0,200	● ◎	● ◎
53,00	1,50	DN 50 DIN BS	70	70	DB33	DB30	0,200	● ◎	● ◎
53,00	1,50	DN 50 DIN BL	70	110	DB33	DB30	0,200	●	●
60,30	2,00	DN 50 EN-3D	76	76	DB63	DB60	0,349	● ◎	● ◎

- = voorraad ongeslepen
- ◎ = voorraad geslepen K320
- = af fabriek

- = stock, not polished
- ◎ = stock polished G320
- = ex works



## Zuivel bocht 90°

Bend 90°

DS, SMS, DIN 11852, ISO, EN-3D

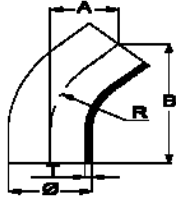
EN 10204 3.1



Ø mm	Wall	Type	R	A	Art. no.		Kg / pc	4301 4307		4404
					matt	satin G320				
63,50	1,20	2 1/2" ISO short	95	114	DB23	DB20	0,540	⊙		⊙
63,50	1,20	2 1/2" ISO long	95	135		DB21	0,590			⊙
63,50	1,50	2 1/2" DIN " inch"	83	83	DB53	DB50	0,290	● ⊙		● ⊙
63,50	1,60	2 1/2" ISO short	95	114		DB20	0,348	⊙		⊙
63,50	1,60	2 1/2" DS/SMS	70	105		DB10	0,540			⊙
70,00	2,00	DN 65 DIN BS	80	80	DB33	DB30	0,540	● ⊙		● ⊙
70,00	2,00	DN 65 DIN BL	80	120	DB34	DB31	0,590		○	
76,10	1,50	3" DIN " inch"	95	95	DB53	DB50	0,500	● ⊙		● ⊙
76,10	1,60	3" ISO short	114	134		DB20	0,690	⊙		⊙
76,10	1,60	3" ISO long	114	155		DB21	0,790	⊙		⊙
76,10	1,60	3" ISO lengthened	114	200		DB22	0,850			⊙
76,10	2,00	3" DS/SMS	76	110		DB10	0,730	⊙		⊙
76,10	2,00	DN 65 EN-3D	96	96	DB63	DB60	0,559	● ⊙		● ⊙
85,00	2,00	DN 80 DIN BS	90	100	DB33	DB30	0,730	● ⊙		● ⊙
85,00	2,00	DN 80 DIN BL	90	145	DB34	DB31	0,810		○	
88,90	2,00	DN 80 EN-3D	114	114	DB63	DB60	0,782	● ⊙		● ⊙
101,60	2,00	4" DS/SMS	110	150		DB10	1,100	⊙		⊙
101,60	2,00	4" DIN " inch"	134	134	DB53	DB50	1,100	● ⊙		● ⊙
101,60	2,00	4" ISO short	152	174		DB20	1,130	⊙		⊙
101,60	2,00	4" ISO long	152	195		DB21	1,170			⊙
104,00	2,00	DN100 DIN BS	100	100	DB33	DB30	0,850	● ⊙		● ⊙
104,00	2,00	DN100 DIN BL	100	155	DB34	DB31	0,980		○	
114,30	2,00	DN100 EN-3D	153	153	DB63	DB60	1,347	● ⊙		● ⊙
129,00	2,00	DN125 DIN short	188	188	DB33	DB30	1,900	●		●
139,70	2,00	DN125 EN-3D	190	190	DB63	DB60	2,700		○	
154,00	2,00	DN150 DIN short	225	225	DB33	DB30	2,700	●		●
168,30	2,00	DN150 EN-3D	229	229	DB63	DB60	3,800		○	

- = voorraad ongeslepen
- ⊙ = voorraad geslepen K320
- = af fabriek

- = stock, not polished
- ⊙ = stock polished G320
- = ex works

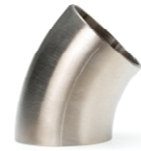


## Zuivelbocht 45°

Bend 45°

DS, SMS, DIN 11852, ISO, EN-3D

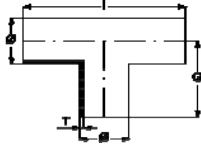
EN 10204 3.1



Ø mm	Wall	Type		R	A	B	Art. no.		Kg / pc	Material	
							matt	satin G320		4301 4307	4404
17,20	1,60	DN 10	EN-3D	25	25		DB68	DB65	0,014	○	○
19,00	1,50	DN 15	DIN BS	35			DB38	DB35	0,031	○	● ◎
21,30	1,60	DN 15	EN-3D	28			DB68	DB65	0,021	○	● ◎
23,00	1,50	DN 20	DIN BS	40			DB38	DB35	0,031	○	● ◎
25,00	1,20	1"	DS/SMS	25	32	77		DB15	0,060	◎	◎
25,00	1,20	1"	ISO	37,5	21,4	51,5		DB25	0,060	◎	◎
25,00	1,60	1"	SWG	37,5	24,4	51,5		DB25	0,070		◎
25,40	1,20	1"	DIN " inch"	28			DB58	DB55	0,015	○	● ◎
26,90	1,60	DN 20	EN-3D	29			DB68	DB65	0,028	○	● ◎
28,00	1,50	DN 25	DIN BS	50		34	DB38	DB35	0,040	○	● ◎
29,00	1,50	DN 25	DIN BS	50			DN38	DB35		○	● ◎
32,00	1,20	1 1/4"	DS/SMS	32	38	91		DB15	0,090	○	◎
33,70	2,00	DN 25	EN-3D	38			DB68	DB65	0,048	○	● ◎
35,00	1,50	DN 32	DIN BS	55			DB 38	DB35	0,050	○	● ◎
38,00	1,20	1 1/2"	DS/SMS	38	40	97		DB15	0,110	◎	◎
38,00	1,20	1 1/2"	ISO	57	29,2	70,5		DB25	0,110	◎	◎
38,00	1,60	1 1/2"	SWG	47	29,2	70,5		DB25	0,120		◎
38,10	1,50	1 1/2"	DIN " inch"	45			DB58	DB55	0,050	○	● ◎
40,00	1,50	DN 40	DIN BS	60		41	DB38	DB35	0,070	○	● ◎
41,00	1,50	DN 40	DIN BS	60		41	DB38	DB35	0,070	○	● ◎
42,40	2,00	DN 32	EN-3D	48			DB68	DB65	0,076	○	● ◎
48,30	2,00	DN 40	EN-3D	57			DB68	DB65	0,104	○	● ◎
50,80	1,50	2"	DIN " inch"	68			DB58	DB55	0,100	○	● ◎
50,80	1,60	2"	SWG	76,5	41,5	100		DB25	0,190		◎
51,00	1,20	2"	DS/SMS	51	45	108		DB15	0,180	◎	◎
51,00	1,20	2"	ISO	76,5	41,5	100		DB25	0,180	◎	◎
52,00	1,50	DN 50	DIN BS	70		48		DB35	0,100		◎
53,00	1,50	DN 50	DIN BS	70			DB38	DB35	0,100	○	● ◎
60,30	2,00	DN 50	EN-3D	76			DB68	DB65	0,176	○	● ◎
63,50	1,20	2 1/2"	ISO	96,3	53,8	130		DB25	0,390	◎	◎
63,50	1,50	2.1/2"	DIN " inch"	83			DB58	DB55	0,150	○	● ◎
63,50	1,60	2 1/2"	DS/SMS	63,5	57	138		DB15	0,390	◎	◎
70,00	2,00	DN 65	DIN BS	80		55	DB38	DB35	0,200	○	● ◎
76,10	1,50	3"	DIN " inch"	95			DB58	DB55	0,250	○	● ◎
76,10	1,60	3"	ISO	114,2	63,8	154		DB25	0,550	◎	◎
76,10	2,00	3"	DS/SMS	76,1	58	140		DB15	0,600	◎	◎
76,10	2,00	DN 65	EN-3D	95			DB68	DB65	0,290	○	● ◎
85,00	2,00	DN 80	DIN BS	90		63	DB38	DB35	0,290	○	● ◎
88,90	2,00	DN 80	EN-3D	114			DB68	DB65	0,390	○	● ◎
101,60	2,00	4"	DS/SMS	150	77	186		DB15	1,000	◎	◎
101,60	2,00	4"	DIN " inch"	134			DB58	DB55	0,600	○	● ◎
101,60	2,00	4"	ISO	152,4	86,4	209		DB25	1,000	◎	◎
104,00	2,00	DN100	DIN BS	100		70	DB38	DB35	0,380	○	● ◎
114,30	2,00	DN100	EN-3D	152			DB68	DB65	0,670	○	● ◎
129,00	2,00	DN125	DIN BS	188		132	DB38	DB35	0,950	○	●
139,70	2,00	DN125	EN-3D	190			DB68	DB65	1,350	○	◎
154,00	2,00	DN150	DIN BS	225		158	DB38	DB35	1,35	○	●
168,30	2,00	DN150	EN-3D	229			DB68	DB65	1,900	○	◎

- = voorraad ongeslepen
- ◎ = voorraad geslepen K320
- = af fabriek

- = stock, not polished
- ◎ = stock polished G320
- = ex works



# T-stuk

## Tee equal

DS, SMS, DIN 11852, ISO, EN-fig 7

EN 10204 3.1



Ø mm	Wall	Type		L	G	Art. no.		Kg / pc	4301 4307		4404	
						matt	satin G320					
17,20	1,60	DN 10	EN fig 7	25	25	DT63	DT60	0,050		●		●
19,00	1,50	DN 15	DIN TS	70	35	DT33	DT30	0,085	●	◎		● ◎
21,30	1,60	DN 15	EN fig 7	50	25	DT63	DT60	0,055	●	◎		● ◎
23,00	1,50	DN 20	DIN TS	80	40	DT33	DT30	0,095	●	◎		● ◎
25,00	1,20	1"	DS/SMS	110	55		DT10	0,110		◎		◎
25,00	1,20	1"	ISO	87	44		DT20	0,090		◎		◎
25,40	1,20	1"	DIN " inch"	88	44	DT53	DT50	0,086	●	◎		● ◎
25,40	1,60	1"	SWG	87	44		DT20	0,120				◎
26,90	1,60	DN 20	EN fig 7	58	29	DT63	DT60	0,790	●	◎		● ◎
28,00	1,50	DN 25	DIN TS	100	50		DT30	0,150		◎		◎
29,00	1,50	DN 25	DIN TS	100	50	DT33	DT30	0,150	●	◎		● ◎
32,00	1,20	1 1/4"	DS/SMS	128	64		DT10	0,170				◎
33,70	2,00	DN 25	EN fig 7	76	38	DT63	DT60	0,137	●	◎		● ◎
35,00	1,50	DN 32	DIN TS	110	55	DT33	DT30	0,180	●	◎		● ◎
38,00	1,20	1 1/2"	DS/SMS	140	70		DT10	0,220		◎		◎
38,00	1,20	1 1/2"	ISO	128	64		DT20	0,200		◎		◎
38,10	1,50	1 1/2"	DIN " inch"	128	64	DT53	DT50	0,240	●	◎		● ◎
38,10	1,60	1 1/2"	SWG	128	64		DT20	0,230		◎		◎
40,00	1,50	DN 40	DIN TS	120	60		DT30	0,240		◎		◎
41,00	1,50	DN 40	DIN TS	120	60	DT33	DT30	0,240	●	◎		● ◎
42,40	2,00	DN 32	EN fig 7	96	48	DT63	DT60	0,233	●	◎		● ◎
48,30	2,00	DN 40	EN fig 7	104	57	DT63	DT60	0,307	●	◎		● ◎
50,80	1,50	2"	DIN " inch"	178	89	DT53	DT50	0,470	●	◎		● ◎
50,80	1,60	2"	SWG	178	89		DT20	0,420		◎		◎
51,00	1,20	2"	DS/SMS	164	82		DT10	0,370		◎		◎
51,00	1,20	2"	ISO	177	86		DT20	0,390		◎		◎
52,00	1,50	DN 50	DIN TS	140	70	DT33	DT30	0,330	●	◎		● ◎
53,00	1,50	DN 50	DIN TS	140	70		DT30	0,330		◎		◎
60,30	2,00	DN 50	EN fig 7	128	64	DT63	DT60	0,408	●	◎		● ◎
63,50	1,50	2 1/2"	DIN " inch"	228	114	DT53	DT50	0,700	●	◎		● ◎
63,50	1,60	2 1/2"	DS/SMS	210	105		DT10	0,610		◎		◎
63,50	1,60	2 1/2"	ISO	228	114		DT20	0,650		◎		◎
70,00	2,00	DN65	DIN TS	160	80	DT33	DT30	0,680	●	◎		● ◎
76,10	1,50	3"	DIN " inch"	268	134	DT53	DT50	1,040	●	◎		● ◎
76,10	1,60	3"	ISO	268	134		DT20	0,980		◎		◎
76,10	2,00	DN65	EN fig 7	152	76	DT63	DT60	0,603	●	◎		● ◎
76,10	2,00	3"	DS/SMS	220	110		DT10	0,990		◎		◎
85,00	2,00	DN 80	DIN	180	90	DT33	DT30	1,070	●	◎		● ◎
88,90	2,00	DN 80	DIN TS	172	86	DT63	DT60	0,860	●	◎		● ◎
101,60	2,00	4"	DS/SMS	300	150		DT10	1,700		◎		◎
101,60	2,00	4"	ISO/DIN " inch"	348	174	DT23	DT20	1,810	●	◎		● ◎
104,00	2,00	DN100	DIN TS	200	100	DT33	DT30	1,400	●	◎		● ◎
114,30	2,00	DN100	EN fig 7	210	105	DT63	DT60	1,268	●	◎		● ◎
129,00	2,00	DN125	DIN TS	375	188	DT33	DT30	1,800	●			●
139,70	2,00	DN125	EN fig 7	228	124	DT63	DT60	2,200		◎		◎
154,00	2,00	DN150	DIN TS	450	225	DT33	DT30	2,800	●			●
168,30	2,00	DN150	EN fig 7	286	143	DT63	DT60	5,500		◎		◎

- = voorraad ongeslepen
- ◎ = voorraad geslepen K320
- = af fabriek

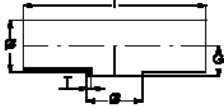
- = stock
- ◎ = stock polished G320
- = ex works

# T-stuk uitgehalst

## Tee short

DS, SMS, DIN 11852-TK, ISO, EN-fig 6

EN 10204 3.1



Ø mm	Wall	Type		l	G	Art. no.		Kg / pc	4301 4307		4404		
						matt	satin G320						
17,20	1,60	DN 10	EN fig 7	25	10	DT64	DT61	0,040		○		○	
19,00	1,50	DN 15	DIN TK	70	11	DT34	DT31	0,030	●	◎		●	◎
21,30	1,60	DN 15	EN fig 6	50	12	DT64	DT61	0,044		○		●	◎
23,00	1,50	DN 20	DIN TK	80	13	DT34	DT31	0,070	●	◎		●	◎
25,00	1,20	1"	DS/SMS	110	14		DT11	0,050		◎			◎
25,00	1,20	1"	ISO	87	14		DT21	0,060		◎			◎
25,40	1,20	1"	DIN "inch"	88	14	DT54	DT51	1,100	●	◎		●	◎
25,40	1,60	1"	SWG	87	14		DT21	0,070					◎
26,90	1,60	DN 20	EN fig 6	58	15	DT64	DT61	0,063	●	◎		●	◎
28,00	1,50	DN 25	DIN TK	100	16	DT34	DT31	0,080		○			◎
29,00	1,50	DN 25	DIN TK	100	16	DT34	DT31	0,080	●	◎		●	◎
32,00	1,20	1 1/4"	DS/SMS	128	18		DT11	0,090					○
33,70	2,00	DN 25	EN fig 6	76	19	DT64	DT61	0,107	●	◎		●	◎
35,00	1,50	DN 32	DIN TK	110	20	DT34	DT31	0,110	●	◎		●	◎
38,00	1,20	1 1/2"	DS/SMS	140	22		DT11	0,160		◎			◎
38,00	1,20	1 1/2"	ISO	128	22		DT21	0,150		◎			◎
38,10	1,50	1 1/2"	DIN "inch"	128	22	DT54	DT51	0,240	●	◎		●	◎
38,10	1,60	1 1/2"	SWG	128	22		DT21	0,170		◎			◎
40,00	1,50	DN 40	DIN TK	120	23	DT34	DT31	0,160		◎			◎
41,00	1,50	DN 40	DIN TK	120	23	DT34	DT31	0,160	●	◎		●	◎
42,40	2,00	DN 32	EN fig 6	96	24	DT64	DT61	0,179	●	◎		●	◎
48,30	2,00	DN 40	EN fig 6	114	26	DT64	DT61	0,242	●	◎		●	◎
50,80	1,50	2"	DIN "inch"	178	29	DT54	DT51	0,350	●	◎		●	◎
50,80	1,60	2"	SWG	178	29		DT21	0,350		◎			◎
51,00	1,20	2"	DS/SMS	164	29		DT11	0,230		◎			◎
51,00	1,20	2"	ISO	177	29		DT21	0,240		◎			◎
52,00	1,50	DN 50	DIN TK	140	30	DT34	DT31	0,260		◎			◎
53,00	1,50	DN 50	DIN TK	140	30	DT34	DT31	0,270	●	◎		●	◎
60,30	2,00	DN 50	EN fig 6	128	34	DT64	DT61	0,345	●	◎		●	◎
63,50	1,50	2 1/2"	DIN "inch"	228	35	DT54	DT51	0,520	●	◎		●	◎
63,50	1,60	2 1/2"	DS/SMS	210	35		DT11	0,490		◎			◎
63,50	1,60	2 1/2"	ISO	228	35		DT21	0,510		◎			◎
70,00	2,00	DN 65	DIN TK	160	40	DT34	DT31	0,480	●	◎		●	◎
76,10	1,50	3"	DIN "inch"	268	41	DT54	DT51	0,770	●	◎		●	◎
76,10	1,60	3"	ISO	268	41		DT21	0,770		◎			◎
76,10	2,00	DN 65	EN fig 6	152	42	DT64	DT61	0,564	●	◎		●	◎
76,10	2,00	3"	DS/SMS	220	41		DT11	0,690		◎			◎
85,00	2,00	DN 80	DIN TK	180	48	DT34	DT31	0,650	●	◎		●	◎
88,90	2,00	DN 80	EN fig 6	172	49	DT64	DT61	0,679	●	◎		●	◎
101,60	2,00	4"	DS/SMS	300	55		DT11	1,000		◎			◎
101,60	2,00	4"	ISO/DIN"inch"	348	55	DT24	DT21	1,100	●	◎		●	◎
104,00	2,00	DN100	DIN TK	200	58	DT34	DT31	0,910	●	◎		●	◎
114,30	2,00	DN100	EN fig 6	210	63	DT64	DT61	1,095	●	◎		●	◎
129,00	2,00	DN125	DIN TK	347	72	DT34	DT31	2,360	●			●	
139,70	2,00	DN125	EN fig 6	278	76	DT64	DT61	1,800		○			○
154,00	2,00	DN150	DIN TK	200	87	DT34	DT31	3,000	●			●	
168,30	2,00	DN 150	EN fig 6	286	92	DT64	DT61	2,600		○			○

- = voorraad ongeslepen
- ◎ = voorraad geslepen K320
- = af fabriek

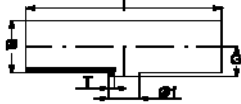
- = stock, not polished
- ◎ = stock polished G320
- = ex works

## Verloop T-stuk

Tee reduced

DS, SMS, DIN 11852-RTK, ISO, EN-fig 6

EN 10204 3.1



Ø mm	Wall 1	Ø1	Wall 2	Type	l	G	Art. no.		Kg / pc	4301		4404
							matt	satin G320		4307		
21,30	1,60	17,20	1,60	DN 15-DN 10 EN fig 6	25	12	DT65	DT62	0,050	○	○	
23,00	1,50	19,00	1,50	DN 20-DN 15 DIN RTK	80	13	DT35	DT32	0,070	○	● ◎	
26,90	1,60	17,20	1,60	DN 20-DN 10 EN fig 6	58	15	DT65	DT62	0,060	○	○	
26,90	1,60	21,30	1,60	DN 20-DN 15 EN fig 6	58	15	DT65	DT62	0,060	○	● ◎	
29,00	1,50	19,00	1,50	DN 25-DN 15 DIN RTK	100	16	DT35	DT32	0,178	○	● ◎	
29,00	1,50	23,00	1,50	DN 25-DN 20 DIN RTK	100	16	DT35	DT32	0,178	○	● ◎	
33,70	2,00	17,20	1,60	DN 25-DN 10 EN fig 6	76	19	DT65	DT62	0,110	○	○	
33,70	2,00	21,30	1,60	DN 25-DN 15 EN fig 6	76	19	DT65	DT62	0,110	○	● ◎	
33,70	2,00	26,90	1,60	DN 25-DN 20 EN fig 6	76	19	DT65	DT62	0,110	○	● ◎	
35,00	1,50	19,00	1,50	DN 32-DN 15 DIN RTK	110	19	DT35	DT32	0,185	○	● ◎	
35,00	1,50	23,00	1,50	DN 32-DN 20 DIN RTK	110	19	DT35	DT32	0,185	○	● ◎	
35,00	1,50	29,00	1,50	DN 32-DN 25 DIN RTK	110	19	DT35	DT32	0,160	○	● ◎	
38,00	1,20	25,00	1,20	1½"-1" DS/SMS	140	22		DT12	0,160	○	◎	
38,00	1,20	25,00	1,20	1½"-1" ISO	127	22		DT22	0,150	○	◎	
38,10	1,50	25,40	1,20	1½"-1" DIN "inch"	128	22	DT55	DT52	0,178	○	● ◎	
38,10	1,60	25,40	1,60	1½"-1" SWG	127	22		DT22	0,170	○	◎	
41,00	1,50	23,00	1,50	DN 40-DN 20 DIN RTK	120	23	DT35	DT32	0,170	○	● ◎	
41,00	1,50	29,00	1,50	DN 40-DN 25 DIN RTK	120	23	DT35	DT32	0,170	○	● ◎	
41,00	1,50	35,00	1,50	DN 40-DN 32 DIN RTK	120	23	DT35	DT32	0,170	○	● ◎	
42,40	2,00	21,30	1,60	DN 32-DN 15 EN fig 6	96	24	DT65	DT62	0,180	○	● ◎	
42,40	2,00	26,90	1,60	DN 32-DN 20 EN fig 6	96	24	DT65	DT62	0,180	○	● ◎	
42,40	2,00	33,70	2,00	DN 32-DN 25 EN fig 6	96	24	DT65	DT62	0,180	○	● ◎	
48,30	2,00	26,90	1,60	DN 40-DN 20 EN fig 6	114	26	DT65	DT62	0,240	○	● ◎	
48,30	2,00	33,70	2,00	DN 40-DN 25 EN fig 6	114	26	DT65	DT62	0,240	○	● ◎	
48,30	2,00	42,40	2,00	DN 40-DN 32 EN fig 6	114	26	DT65	DT62	0,340	○	● ◎	
50,80	1,50	25,40	1,20	2"-1" DIN "inch"	178	29	DT55	DT52	0,330	○	● ◎	
50,80	1,50	38,10	1,50	2"-1½" DIN "inch"	178	29	DT55	DT52	0,350	○	● ◎	
50,80	1,60	25,40	1,60	2"-1" SWG	177	29		DT22	0,260	○	◎	
50,80	1,60	38,10	1,60	2"-1½" SWG	177	29		DT22	0,260	○	◎	
51,00	1,20	25,00	1,20	2"-1" DS/SMS	164	29		DT12	0,240	○	◎	
51,00	1,20	25,00	1,20	2"-1" ISO	177	29		DT22	0,250	○	◎	
51,00	1,20	38,00	1,20	2"-1½" DS/SMS	164	29		DT12	0,240	○	◎	
51,00	1,20	38,00	1,20	2"-1½" ISO	177	29		DT22	0,250	○	◎	
52,00	1,50	28,00	1,50	DN50-DN25 DIN RTK	140	30	DT35	DT32	0,270	○	◎	
52,00	1,50	40,00	1,20	DN50-DN40 DIN RTK	140	30	DT35	DT32	0,260	○	◎	
53,00	1,50	29,00	1,50	DN50-DN25 DIN RTK	140	28	DT35	DT32	0,245	○	● ◎	
53,00	1,50	35,00	1,50	DN50-DN32 DIN RTK	140	29	SR35	DT32	0,245	○	● ◎	
53,00	1,50	41,00	1,50	DN50-DN40 DIN RTK	140	29	DT35	DT32	0,245	○	● ◎	
60,30	2,00	33,70	2,00	DN50-DN25 EN fig 6	128	34	DT65	DT62	1,500	○	● ◎	
60,30	2,00	42,40	2,00	DN50-DN32 EN fig 6	128	34	DT65	DT62	1,500	○	● ◎	
60,30	2,00	48,30	2,00	DN50-DN40 EN fig 6	128	34	DT65	DT62	1,500	○	● ◎	

- = voorraad ongeslepen
- ◎ = voorraad geslepen K320
- = af fabriek

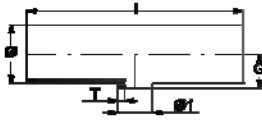
- = stock, not polished
- ◎ = stock polished G320
- = ex works

## Verloop T-stuk

Tee reduced

DS, SMS, DIN 11852-RTK, ISO, EN-fig 6

EN 10204 3.1



Ø mm	Wall 1	Ø1	Wall 2	Type	l	G	Art. no.		Kg / pc	4301		4404
							matt	satin G320		4307		
63,50	1,50	25,40	1,20	2½"-1" DIN "inch"	228	35	DT55	DT52	0,480	○	●	◎
63,50	1,50	38,10	1,50	2½"-1½" DIN "inch"	228	35	DT55	DT52	0,520	○	●	◎
63,50	1,60	25,00	1,20	2½"-1" DS/SMS	210	35		DT12	0,540	○		◎
63,50	1,60	25,00	1,20	2½"-1" ISO	227	35		DT22	0,550	○		◎
63,50	1,60	38,00	1,20	2½"-1½" DS/SMS	210	35		DT12	0,530	○		◎
63,50	1,60	38,00	1,20	2½"-1½" ISO	227	35		DT22	0,550	○		◎
63,50	1,60	38,10	1,60	2½"-1½" ISO	227	35		DT52	0,700	○		◎
63,50	1,60	50,80	1,60	2½"-2" ISO	227	35		DT52	0,700	○		◎
63,50	1,60	51,00	1,20	2½"-2" DS/SMS	210	35		DT12	0,520	○		◎
63,50	1,60	51,00	1,20	2½"-2" ISO	227	35		DT22	0,540	○		◎
70,00	2,00	28,00	1,50	DN65-DN25 DIN RTK	160	40	DT35	DT32	0,650	○		◎
70,00	2,00	34,00	1,50	DN65-DN32 DIN RTK	160	40	DT35	DT32	0,640	○		◎
70,00	2,00	35,00	1,50	DN65-DN32 DIN RTK	160	40	DT35	DT32	0,640	○	●	◎
70,00	2,00	40,00	1,50	DN65-DN40 DIN RTK	160	40	DT35	DT32	0,640	○		◎
70,00	2,00	41,00	1,50	DN65-DN40 DIN RTK	160	40	DT35	DT32	0,640	○	●	◎
70,00	2,00	52,00	1,50	DN65-DN50 DIN RTK	160	40	DT35	DT32	0,620	○		◎
70,00	2,00	53,00	1,50	DN65-DN50 DIN RTK	160	40	DT35	DT32	0,620	○	●	◎
76,10	1,60	25,00	1,20	3"-1" ISO	267	41		DT22	0,800	○		◎
76,10	1,60	38,00	1,20	3"-1½" ISO	267	41		DT22	0,800	○		◎
76,10	1,50	38,10	1,50	3"-1½" DIN "inch"	268	41	DT55	DT52	0,770	○	●	◎
76,10	1,60	50,80	1,20	3"-2" ISO	267	41		DT22	0,800	○		◎
76,10	1,50	50,80	1,50	3"-2" DIN "inch"	268	41	DT55	DT52	0,770	○	●	◎
76,10	1,50	63,50	1,50	3"-2½" DIN "inch"	268	41	DT55	DT52	0,770	○	●	◎
76,10	1,60	63,50	1,60	3"-2½" ISO	267	41		DT22	0,800	○		◎
76,10	2,00	25,00	1,20	3"-1" DS/SMS	220	41		DT12	0,890	○		◎
76,10	2,00	38,00	1,20	3"-1½" DS/SMS	220	41		DT12	0,880	○		◎
76,10	2,00	42,40	2,00	DN65-DN32 EN fig 6	152	42	DT65	DT62	0,530	○	●	◎
76,10	2,00	48,30	2,00	DN65-DN40 EN fig 6	152	42	DT65	DT62	0,530	○	●	◎
76,10	2,00	60,30	2,00	DN65-DN50 EN fig 6	152	42	DT65	DT62	0,530	○	●	◎
76,10	2,00	63,50	1,60	3"-2½" DS/SMS	220	41		DT12	0,860	○		◎
85,00	2,00	28,00	1,50	DN80-DN25 DIN RTK	180	48	DT35	DT32	0,860	○		◎
85,00	2,00	40,00	1,50	DN80-DN40 DIN RTK	180	48	DT35	DT32	0,850	○		◎
85,00	2,00	41,00	1,50	DN80-DN40 DIN RTK	180	48		DT32	0,850	○	●	◎
85,00	2,00	52,00	1,50	DN80-DN50 DIN RTK	180	48	DT35	DT32	0,840	○		◎
85,00	2,00	53,00	1,50	DN80-DN50 DIN RTK	180	48	DT35	DT32	0,840	○	●	◎
85,00	2,00	70,00	2,00	DN80-DN65 DIN RTK	180	48	DT35	DT32	0,830	○	●	◎
88,90	2,00	48,30	2,00	DN80-DN40 EN fig 6	172	49	DT65	DT62	0,830	○	●	◎
88,90	2,00	60,30	2,00	DN80-DN50 EN fig 6	172	49	DT65	DT62	0,680	○	●	◎
88,09	2,00	76,10	2,00	DN80-DN65 EN fig 6	172	49	DT65	DT62	0,680	○		◎

- = voorraad ongeslepen
- ◎ = voorraad geslepen K320
- = af fabriek

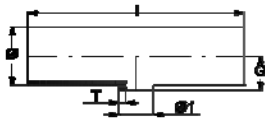
- = stock, not polished
- ◎ = stock polished G320
- = ex works

## Verloop T-stuk

Tee reduced

DS, SMS, DIN 11852-RTK, ISO, EN-fig 6

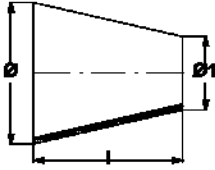
EN 10204 3.1



Ø mm	Wall 1	Ø1	Wall 2	Type	l	G	Art. no.		Kg / pc	4301 4307		4404
							matt	satin G320		○	◎	
101,60	2,00	25,00	1,20	4"-1" DS/SMS	300	55	DT12	DT12	1,510	○	◎	○
101,60	2,00	25,00	1,20	4"-1" ISO	347	55	DT22	DT22	1,590	○	◎	○
101,60	2,00	38,00	1,20	4"-1½" DS/SMS	300	55	DT12	DT12	1,500	○	◎	○
101,60	2,00	38,00	1,20	4"-1½" ISO	347	55	DT22	DT22	1,580	○	◎	○
101,60	2,00	51,00	1,20	4"-2" DS/SMS	300	55	DT12	DT12	1,490	○	◎	○
101,60	2,00	51,00	1,20	4"-2" ISO	347	55	DT22	DT22	1,570	○	◎	○
101,60	2,00	50,80	1,50	4"-2" DIN "inch"	348	55	DT55	DT52	1,590	○	●	◎
101,60	2,00	63,50	1,50	4"-2½" DIN "inch"	348	55	DT55	DT52	1,590	○	●	◎
101,60	2,00	63,50	1,60	4"-2½" DS/SMS	300	55	DT12	DT12	1,480	○	◎	○
101,60	2,00	63,50	1,60	4"-2½" ISO	347	55	DT22	DT22	1,560	○	◎	○
101,60	2,00	76,10	1,50	4"-3" DIN "inch"	348	55	DT55	DT52	1,590	○	●	◎
101,60	2,00	76,00	1,60	4"-3" ISO	347	55	DT22	DT22	1,550	○	◎	○
101,60	2,00	76,00	2,00	4"-3" DS/SMS	300	55	DT12	DT12	1,470	○	◎	○
104,00	2,00	40,00	1,50	DN100-DN40 DIN RTK	200	58	DT35	DT32	0,940	○	◎	○
104,00	2,00	52,00	1,50	DN100-DN50 DIN RTK	200	58	DT35	DT32	0,930	○	◎	○
104,00	2,00	53,00	1,50	DN100-DN50 DIN RTK	200	58	DT35	DT32	0,930	○	●	◎
104,00	2,00	70,00	2,00	DN100-DN65 DIN RTK	200	58	DT35	DT32	0,920	○	●	◎
104,00	2,00	85,00	2,00	DN100-DN80 DIN RTK	200	58	DT35	DT32	0,910	○	●	◎
114,30	2,00	60,30	2,00	DN100-DN50 EN fig 6	210	63	DT65	DT62	1,100	○	●	◎
114,30	2,00	76,10	2,00	DN100-DN65 EN fig 6	210	63	DT65	DT62	1,000	○	●	◎
114,30	2,00	88,90	2,00	DN100-DN80 EN fig 6	210	63	DT65	DT62	1,090	○	●	◎
129,00	2,00	70,00	2,00	DN125-DN65 DIN RTK	375	72	DT35	DT32	2,440	○	◎	○
129,00	2,00	76,10	2,00	DN125-3" DIN/ISO	375	72	DT35	DT32	2,420	○	◎	○
129,00	2,00	85,00	2,00	DN125-DN80 DIN RTK	375	72	DT35	DT32	2,400	○	◎	○
129,00	2,00	101,60	2,00	DN125-4" DIN/ISO	375	72	DT35	DT32	2,380	○	◎	○
129,00	2,00	104,00	2,00	DN125-DN100 DIN RTK	375	72	DT35	DT32	2,360	○	◎	○
139,70	2,00	76,10	2,00	DN125-DN65 EN fig 6	278	76	DT65	DT62	1,800	○	◎	○
139,70	2,00	88,90	2,00	DN125-DN80 EN fig 6	278	76	DT65	DT62	1,800	○	◎	○
139,70	2,00	114,30	2,00	DN125-DN100 EN fig 6	278	76	DT65	DT62	1,800	○	◎	○
154,00	2,00	76,10	2,00	DN125-3" DIN/ISO	450	87	DT35	DT32	3,060	○	◎	○
154,00	2,00	85,00	2,00	DN150-DN80 DIN RTK	450	87	DT35	DT32	3,040	○	◎	○
154,00	2,00	101,60	2,00	DN150-4" DIN/ISO	450	87	DT35	DT32	3,000	○	◎	○
154,00	2,00	104,00	2,00	DN150-DN100 DIN RTK	450	87	DT35	DT32	3,000	○	◎	○
154,00	2,00	129,00	2,00	DN150-DN125 DIN RTK	450	87	DT35	DT32	3,000	○	◎	○
168,30	2,00	88,90	2,00	DN150-DN80 EN fig 6	286	92	DT65	DT62	2,600	○	◎	○
168,30	2,00	114,30	2,00	DN150-DN100 EN fig 6	286	92	DT65	DT62	2,600	○	◎	○
168,30	2,00	139,70	2,00	DN150-DN125 EN fig 6	286	92	DT65	DT62	2,600	○	◎	○

- = Voorraad ongeslepen
- ◎ = Voorraad geslepen K320
- = Af fabriek

- = Stock
- ◎ = Stock polished G320
- = Ex works



## Concentrisch lasverloop

### Concentric reducer

DS, SMS, DIN 11852-RK, ISO, EN-fig 10

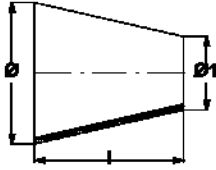
EN 10204 3.1



Ø mm	Wall 1	Ø1	Wall 2	Type		l	Art. no.		Kg / pc	4301 4307		4404		
							matt	satin G320						
21,30	1,60	17,20	1,60	DN15-DN10	EN fig 10	25	DR63	DR60	0,030		○		○	
23,00	1,50	19,00	1,50	DN20-DN15	DIN RK	7	DR33	DR30	0,020	●	◎		●	◎
26,90	1,60	17,20	1,60	DN20-DN10	EN fig 10	38	DR63	DR60	0,042		○			○
26,90	1,60	21,30	1,60	DN20-DN15	EN fig 10	38	DR63	DR60	0,042	●	◎		●	◎
29,00	1,50	19,00	1,50	DN25-DN15	DIN RK	18	DR33	DR30	0,022	●	◎		●	◎
29,00	1,50	23,00	1,50	DN25-DN20	DIN RK	11	DR33	DR30	0,024	●	◎		●	◎
33,70	2,00	17,20	1,60	DN25-DN10	EN fig 10	51	DR63	DR60	0,065		○			○
33,70	2,00	21,30	1,60	DN25-DN15	EN fig 10	51	DR63	DR60	0,065	●	◎		●	◎
33,70	2,00	26,90	1,60	DN25-DN20	EN fig 10	51	DR63	DR60	0,072	●	◎		●	◎
35,00	1,50	23,00	1,50	DN32-DN20	DIN RK	22	DR33	DR30	0,054	●	◎		●	◎
35,00	1,50	29,00	1,50	DN32-DN25	DIN RK	11	DR33	DR30	0,020	●	◎		●	◎
38,00	1,20	25,00	1,20	1½"-1"	ISO	39		DR10	0,030					◎
38,10	1,50	25,45	1,20	1½"-1"	DIN "inch"	22	DR53	DR50	0,030	●	◎		●	◎
40,00	1,50	28,00	1,50	DN40-DN25	DIN RK	22	DR33	DR30	0,030					◎
41,00	1,50	23,00	1,50	DN40-DN20	DIN RK	33	DR33	DR30	0,089	●	◎		●	◎
41,00	1,50	29,00	1,50	DN40-DN25	DIN RK	22	DR33	DR30	0,035	●	◎		●	◎
41,00	1,50	35,00	1,50	DN40-DN32	DIN RK	11	DR33	DR30	0,035	●	◎		●	◎
42,40	2,00	21,30	1,60	DN32-DN15	EN fig 10	51	DR63	DR60	0,076	●	◎		●	◎
42,40	2,00	26,90	1,60	DN32-DN20	EN fig 10	51	DR63	DR60	0,083	●	◎		●	◎
42,40	2,00	33,70	2,00	DN32-DN25	EN fig 10	51	DR63	DR60	0,092	●	◎		●	◎
48,30	2,00	26,90	1,60	DN40-DN20	EN fig 10	64	DR63	DR60	0,114	●	◎		●	◎
48,30	2,00	33,70	2,00	DN40-DN25	EN fig 10	64	DR33	DR60	0,125	●	◎		●	◎
48,30	2,00	42,40	2,00	DN40-DN32	EN fig 10	64	DR63	DR60	0,139	●	◎		●	◎
50,80	1,50	25,40	1,20	2"-1"	DIN "inch"	45	DR53	DR50	0,080	●	◎		●	◎
50,80	1,50	38,10	1,50	2"-1½"	DIN "inch"	23	DR53	DR50	0,090	●	◎		●	◎
51,00	1,20	25,00	1,20	2"-1"	ISO	78		DR10	0,080					◎
51,00	1,20	38,00	1,20	2"-1½"	ISO	41		DR10	0,090					◎
52,00	1,50	28,00	1,50	DN50-DN25	DIN RK	44	DR33	DR30	0,060					◎
52,00	1,50	40,00	1,50	DN50-DN40	DIN RK	22	DR33	DR30	0,050					◎
53,00	1,50	29,00	1,50	DN50-DN25	DIN RK	44	DR33	DR30	0,152	●	◎		●	◎
53,00	1,50	35,00	1,50	DN50-DN32	DIN RK	33	DR33	DR30	0,060	●	◎		●	◎
53,00	1,50	41,00	1,50	DN50-DN40	DIN RK	22	DR33	DR30	0,122	●	◎		●	◎
60,30	2,00	33,70	2,00	DN50-DN25	EN fig 10	76	DR63	DR60	0,171	●	◎		●	◎
60,30	2,00	42,40	2,00	DN50-DN32	EN fig 10	76	DR63	DR60	0,188	●	◎		●	◎
60,30	2,00	48,30	2,00	DN50-DN40	EN fig 10	76	DR63	DR60	0,199	●	◎		●	◎
63,50	1,60	38,00	1,20	2½"-1½"	ISO	76		DR10	0,110					◎
63,50	1,50	38,10	1,50	2½"-1½"	DIN "inch"	46	DR53	DR50	0,110	●	◎		●	◎
63,50	1,60	51,00	1,20	2½"-2"	ISO	38		DR10	0,090					◎
63,50	1,50	50,80	1,50	2½"-2"	DIN "inch"	23	DR53	DR50	0,090	●	◎		●	◎
70,00	2,00	40,00	1,50	DN65-DN40	DIN RK	51	DR33	DR30	0,110					◎
70,00	2,00	41,00	1,50	DN65-DN40	DIN RK	51	DR33	DR30	0,249	●	◎		●	◎
70,00	2,00	52,00	1,50	DN65-DN50	DIN RK	29	DR33	DR30	0,090					◎
70,00	2,00	53,00	1,50	DN65-DN50	DIN RK	29	DR33	DR30	0,165	●	◎		●	◎

- = Voorraad ongeslepen
- ◎ = Voorraad geslepen K320
- = Af fabriek

- = Stock
- ◎ = Stock polished G320
- = Ex works



## Concentrisch lasverloop

### Concentric reducer

DS, SMS, DIN 11852-RK, ISO, EN-fig 10

EN 10204 3.1



Ø mm	Wall 1	Ø1	Wall 2	Type		l	Art. no.		Kg / pc	4301 4307	4404
							matt	satin G320			
76,10	1,60	38,00	1,20	3"-1½"	ISO	69	DR10	DR10	0,250		⊙
76,10	1,50	38,10	1,50	3"-1½"	DIN "inch"	67	DR53	DR50	0,160	● ⊙	● ⊙
76,10	1,60	51,00	1,20	3"-2"	ISO	72	DR10	DR10	0,200		⊙
76,10	1,50	50,80	1,50	3"-2"	DIN "inch"	44	DR53	DR50	0,120	● ⊙	● ⊙
76,10	1,50	63,50	1,50	3"-2½"	DIN "inch"	21	DR53	DR50	0,110	● ⊙	● ⊙
76,10	1,60	63,50	1,60	3"-2½"	ISO	36	DR10	DR10	0,100		⊙
76,10	2,00	42,40	2,00	DN65-DN32	EN fig 10	89	DR63	DR60	0,360	● ⊙	● ⊙
76,10	2,00	48,30	2,00	DN65-DN40	EN fig 10	89	DR63	DR60	0,360	● ⊙	● ⊙
76,10	2,00	60,30	2,00	DN65-DN50	EN fig 10	89	DR63	DR60	0,360	● ⊙	● ⊙
85,00	2,00	40,00	1,50	DN80-DN40	DIN RK	80	DR33	DR30	0,210		⊙
85,00	2,00	41,00	1,50	DN80-DN40	DIN RK	80	DR33	DR30	0,424	● ⊙	● ⊙
85,00	2,00	52,00	1,50	DN80-DN50	DIN RK	56	DR33	DR30	0,110		⊙
85,00	2,00	53,00	1,50	DN80-DN50	DIN RK	56	DR33	DR30	0,306	● ⊙	● ⊙
85,00	2,00	70,00	2,00	DN80-DN65	DIN RK	27	DR33	DR30	0,120	● ⊙	● ⊙
88,90	2,00	48,30	2,00	DN80-DN40	EN fig 10	89	DR63	DR60	0,400	● ⊙	● ⊙
88,90	2,00	60,30	2,00	DN80-DN50	EN fig 10	89	DR63	DR60	0,400	● ⊙	● ⊙
88,90	2,00	76,10	2,00	DN80-DN65	EN fig 10	89	DR63	DR60	0,400	● ⊙	● ⊙
101,60	2,00	51,00	1,20	4"-2"	ISO	95	DR10	DR10	0,340		⊙
101,60	2,00	50,80	1,50	4"-2"	DIN "inch"	90	DR53	DR50	0,290	● ⊙	● ⊙
101,60	2,00	63,50	1,50	4"-2.1/2"	DIN "inch"	67	DR53	DR50	0,240	● ⊙	● ⊙
101,60	2,00	63,50	1,60	4"-2½"	ISO	105	DR10	DR10	0,240		⊙
101,60	2,00	76,10	1,50	4"-3"	DIN "inch"	46	DR53	DR50	0,170	● ⊙	● ⊙
101,60	2,00	76,00	1,60	4"-3"	ISO	78	DR10	DR10	0,160		⊙
104,00	2,00	52,00	1,50	DN100-DN50	DIN RK	93	DR33	DR30	0,340		⊙
104,00	2,00	53,00	1,50	DN100-DN50	DIN RK	93	DR33	DR30	0,611	● ⊙	● ⊙
104,00	2,00	70,00	2,00	DN100-DN65	DIN RE	61	DR33	DR30	0,230	● ⊙	● ⊙
104,00	2,00	85,00	2,00	DN100-DN80	K	34	DR33	DR30	0,160	● ⊙	● ⊙
114,30	2,00	60,30	2,00	DN100-DN50	EN fig 10	102	DR63	DR60	0,560	● ⊙	● ⊙
114,30	2,00	76,10	2,00	DN100-DN65	EN fig 10	102	DR63	DR60	0,580	● ⊙	● ⊙
114,30	2,00	88,90	2,00	DN100-DN80	EN fig 10	102	DR63	DR60	0,580	● ⊙	● ⊙
129,00	2,00	63,50	1,60	DN125-2½"	DIN/ISO	125,7	DR30	DR30	0,750		○
129,00	2,00	76,10	1,60	DN125-3"	DIN/ISO	100,6	DR30	DR30	0,700		○
129,00	2,00	85,00	2,00	DN125-DN80	DIN RK	79	DR33	DR30	0,660	○	○
129,00	2,00	104,00	2,00	DN125-DN100	DIN RK	45	DR33	DR30	0,550	○	○
139,70	2,00	76,10	2,00	DN125-DN65	EN fig 10	127	DR63	DR60	1,200	○	○
139,70	2,00	88,90	2,00	DN125-DN80	EN fig 10	127	DR63	DR60	1,200	○	○
139,70	2,00	114,30	2,00	DN125-DN100	EN fig 10	127	DR63	DR60	1,100	○	○
154,00	2,00	101,60	2,00	DN125-4"	DIN/ISO	97,2	DR30	DR30	0,870		○
154,00	2,00	104,00	2,00	DN150-DN100	DIN RK	90	DR33	DR30	0,870	○	○
154,00	2,00	129,00	2,00	DN150-DN125	DIN RK	45	DR33	DR30	0,820	○	○
168,30	2,00	88,90	2,00	DN150-DN80	EN fig 10	140	DR63	DR60	1,600	○	○
168,30	2,00	114,30	2,00	DN150-DN100	EN fig 10	140	DR63	DR60	1,500	○	○
168,30	2,00	139,70	2,00	DN150-DN125	EN fig 10	140	DR63	DR60	1,500	○	○

- = Voorraad ongeslepen
- ⊙ = Voorraad geslepen K320
- = Af fabriek

- = Stock
- ⊙ = Stock polished G320
- = Ex works

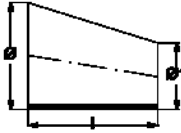
## Excentrisch lasverloop

### Eccentric reducer

DS, SMS, DIN 11852-RE, ISO, EN-fig 11

DIN 11852

EN 10204 3.1



Ø mm	Wall 1	Ø1	Wall 2	Type	l	Art. no.		Kg / pc	4301 4307	4404
						matt	satin G320			
21,30	1,60	17,20	1,60	DN15-DN10 EN fig 11	25	DR68	DR65	0,030	○	○
23,00	1,50	19,00	1,50	DN20-DN15 DIN RE	11	DR38	DR35	0,020	○	● ◎
26,90	1,60	17,20	1,60	DN20-DN10 EN fig 11	38	DR68	DR65	0,042	○	○
26,90	1,60	21,30	1,60	DN20-DN15 EN fig 11	38	DR68	DR65	0,042	○	● ◎
29,00	1,50	19,00	1,50	DN25-DN15 DIN RE	28	DR38	DR35	0,022	○	● ◎
29,00	1,50	23,00	1,50	DN25-DN20 DIN RE	17	DR38	DR35	0,024	○	● ◎
33,70	2,00	17,20	1,60	DN25-DN10 EN fig 11	51	DR68	DR65	0,065	○	○
33,70	2,00	21,30	1,60	DN25-DN15 EN fig 11	51	DR68	DR65	0,065	○	● ◎
33,70	2,00	26,90	1,60	DN25-DN20 EN fig 11	51	DR68	DR65	0,072	○	● ◎
35,00	1,50	23,00	1,50	DN32-DN20 DIN RE	33	DR38	DR35	0,054	○	● ◎
35,00	1,50	29,00	1,50	DN32-DN25 DIN RE	17	DR38	DR35	0,020	○	● ◎
38,00	1,20	25,00	1,20	1½"-1" ISO	38		DR25	0,030		◎
38,10	1,50	25,40	1,20	1½"-1" DIN "inch"	23	DR58	DR55	0,050	○	● ◎
40,00	1,50	28,00	1,50	DN40-DN25 DIN RE	33	DR38	DR35	0,030		◎
41,00	1,50	29,00	1,50	DN40-DN25 DIN RE	22	DR38	DR35	0,065	○	● ◎
41,00	1,50	35,00	1,50	DN40-DN32 DIN RE	17	DR38	DR35	0,035	○	● ◎
42,40	2,00	21,30	1,60	DN32-DN15 EN fig 11	51	DR68	DR65	0,076	○	● ◎
42,40	2,00	26,90	1,60	DN32-DN20 EN fig 11	51	DR68	DR65	0,083	○	● ◎
42,40	2,00	33,70	2,00	DN32-DN25 EN fig 11	51	DR68	DR65	0,092	○	● ◎
48,30	2,00	26,90	1,60	DN40-DN20 EN fig 11	64	DR68	DR65	0,114	○	● ◎
48,30	2,00	33,70	2,00	DN40-DN25 EN fig 11	64	DR68	DR65	0,125	○	● ◎
48,30	2,00	42,40	2,00	DN40-DN32 EN fig 11	64	DR68	DR65	0,139	○	● ◎
50,80	1,50	25,40	1,20	2"-1" DIN "inch"	47	DR58	DR55	0,080	○	● ◎
50,80	1,50	38,10	1,50	2"-1½" DIN "inch"	24	DR58	DR55	0,070	○	● ◎
51,00	1,20	25,00	1,20	2"-1" ISO	75		DR25	0,080		◎
51,00	1,20	38,00	1,20	2"-1½" ISO	40		DR25	0,090		◎
51,00	1,60	38,00	1,60	2"-1½" ISO	40		DR25	0,120		◎
52,00	1,50	28,00	1,50	DN50-DN25 DIN RE	66	DR38	DR35	0,060		◎
52,00	1,50	40,00	1,50	DN50-DN40 DIN RE	33	DR38	DR35	0,050		◎
53,00	1,50	41,00	1,50	DN50-DN40 DIN RE	33	DR38	DR35	0,122	○	● ◎
60,30	2,00	33,70	2,00	DN50-DN25 EN fig 11	76	DR68	DR65	0,171	○	● ◎
60,30	2,00	42,40	2,00	DN50-DN32 EN fig 11	76	DR68	DR65	0,188	○	● ◎
60,30	2,00	48,30	2,00	DN50-DN40 EN fig 11	76	DR68	DR65	0,199	○	● ◎
63,50	1,60	38,00	1,20	2½"-1½" ISO	71		DR25	0,110		◎
63,50	1,50	38,10	1,50	2½"-1½" DIN "inch"	48	DR58	DR55	0,170	○	● ◎
63,50	1,60	51,00	1,20	2½"-2" ISO	37		DR25	0,090		◎
63,50	1,50	50,80	1,50	2½"-2" DIN "inch"	24	DR58	DR55	0,110	○	● ◎
70,00	2,00	40,00	1,50	DN65-DN40 DIN RE	77	DR38	DR35	0,110		◎
70,00	2,00	52,00	1,50	DN65-DN50 DIN RE	44	DR38	DR35	0,090		◎
70,00	2,00	53,00	1,50	DN65-DN50 DIN RE	44	DR38	DR35	0,165	○	● ◎

- = voorraad ongeslepen
- ◎ = voorraad geslepen K320
- = af fabriek

- = stock
- ◎ = stock polished G320
- = ex works

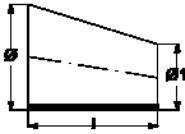
## Excentrisch lasverloop

### Eccentric reducer

DS, SMS, DIN 11852-RE, ISO, EN-fig 11

DIN 11852

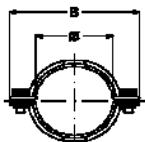
EN 10204 3.1



Ø mm	Wall 1	Ø1	Wall 2	Type		l	Art. no.		Kg / pc	4301 4307		4404	
							matt	satin G320					
76,10	1,60	38,00	1,20	3"-1½"	ISO	112	DR25		0,250			●	◎
76,10	1,60	51,00	1,20	3"-2"	ISO	70	DR25		0,200			●	◎
76,10	1,50	50,80	1,50	3"-2"	DIN "inch"	46	DR58	DR55	0,200	●	●	◎	◎
76,10	1,50	63,50	1,50	3"-2½"	DIN "inch"	22	DR58	DR55	0,130	●	●	◎	◎
76,10	1,60	63,50	1,60	3"-2½"	ISO	36	DR25		0,100			●	◎
76,10	2,00	42,40	2,00	DN65-DN32	EN fig 11	89	DR68	DR65	0,360	●	●	◎	◎
76,10	2,00	48,30	2,00	DN65-DN40	EN fig 11	89	DR68	DR65	0,360	●	●	◎	◎
76,10	2,00	60,30	2,00	DN65-DN50	EN fig 11	89	DR68	DR65	0,360	●	●	◎	◎
85,00	2,00	40,00	1,50	DN80-DN40	DIN RE	118	DR38	DR35	0,210			●	◎
85,00	2,00	52,00	1,50	DN80-DN50	DIN RE	85	DR38	DR35	0,110			●	◎
85,00	2,00	70,00	2,00	DN80-DN65	DIN RE	41	DR38	DR35	0,120			●	◎
88,90	2,00	48,30	2,00	DN80-DN40	EN fig 11	89	DR68	DR65	0,400	●	●	◎	◎
88,90	2,00	60,30	2,00	DN80-DN50	EN fig 11	89	DR68	DR65	0,400	●	●	◎	◎
88,90	2,00	76,10	2,00	DN80-DN65	EN fig 11	89	DR68	DR65	0,400	●	●	◎	◎
101,60	2,00	51,00	1,20	4"-2"	ISO	140	DR25		0,340			●	◎
101,60	2,00	63,50	1,60	4"-2½"	ISO	102	DR25		0,240			●	◎
101,60	2,00	63,50	1,50	4"-2½"	DIN "inch"	70	DR58	DR55	0,340	●	●	◎	◎
101,60	2,00	76,10	1,50	4"-3"	DIN "inch"	48	DR58	DR55	0,210	●	●	◎	◎
101,60	2,00	76,00	1,60	4"-3"	ISO	76	DR25		0,160			●	◎
104,00	2,00	70,00	2,00	DN100-DN65	DIN RE	95	DR38	DR35	0,230	●	●	◎	◎
104,00	2,00	85,00	2,00	DN100-DN80	DIN RE	53	DR38	DR35	0,160	●	●	◎	◎
114,30	2,00	60,30	2,00	DN100-DN50	EN fig 11	102	DR68	DR65	0,560	●	●	◎	◎
114,30	2,00	76,10	2,00	DN100-DN65	EN fig 11	102	DR68	DR65	0,580	●	●	◎	◎
114,30	2,00	88,90	2,00	DN100-DN80	EN fig 11	102	DR68	DR65	0,580	●	●	◎	◎
129,00	2,00	104,00	2,00	DN125-DN100	DIN RE	69	DR38	DR35	0,550	●		●	◎
139,70	2,00	76,10	2,00	DN125-DN65	EN fig 11	127	DR68	DR65	1,200	●		●	◎
139,70	2,00	88,90	2,00	DN125-DN80	EN fig 11	127	DR38	DR65	1,200	●		●	◎
139,70	2,00	114,30	2,00	DN125-DN100	EN fig 11	127	DR68	DR65	1,100	●		●	◎
154,00	2,00	129,00	2,00	DN150-DN125	DIN RE	69	DR38	DR35	0,820	●		●	◎
168,30	2,00	88,90	2,00	DN150-DN80	EN fig 11	140	DR68	DR65	1,600	●		●	◎
168,30	2,00	114,30	2,00	DN150-DN100	EN fig 11	140	DR68	DR65	1,500	●		●	◎
168,30	2,00	139,70	2,00	DN150-DN125	EN fig 11	140	DR68	DR65	1,500	●		●	◎

- = voorraad ongeslepen
- ◎ = voorraad geslepen K320
- = af fabriek

- = stock
- ◎ = stock polished G320
- = ex works



## Pijpbeugel, zadeltipe

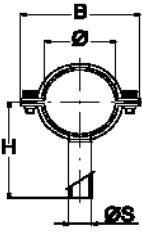
Pipe clip, saddle type



Ø mm		B	Art. no.	4301	4404
10,2		60	DP10	○	
12,0 - 13,5		62	DP10	○	
17,0 - 18,0		68	DP10	○	
19,0		68	DP10	○	
21,3 - 23,0		72	DP10	●	
25,0		78	DP10	●	
26,9 - 29,0		80	DP10	●	
32,0		85	DP10	●	
33,7		87	DP10	●	
38,1		91	DP10	●	
40,0 - 41,0		93	DP10	●	
42,4		96	DP10	●	
48,3		101	DP10	●	
51,0		104	DP10	●	
52,0 - 53,0		107	DP10	●	
60,3		113	DP10	●	
63,5		116	DP10	●	
70,0		123	DP10	●	
76,1		129	DP10	●	
84,0 - 85,0		137	DP10	●	
88,9		143	DP10	●	
101,6		155	DP10	●	
104,0		157	DP10	●	
114,3		167	DP10	○	
129,0		182	DP10	○	
139,7		193	DP10	○	
154,0		207	DP10	○	
168,3		221	DP10	○	
204,0		257	DP10	○	

● = voorraad

● = stock



## Pijpbeugels, zadeltipe met kort rondstaf

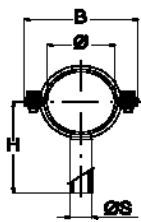
Pipe clip, saddle type with short round bar



Ø mm	B	H	ØS	Art. no.	Kg / pc	4301	4404
10,2		60	55	8,0	DP20	0,09	●
12,0 - 13,5		62	57	8,0	DP20	0,09	●
17,0 - 18,0		68	59	8,0	DP20	0,10	●
19,0		68	60	8,0	DP20	0,11	●
21,3 - 23,0		72	90	21,3	DP20	0,19	●
25,0		78	90	21,3	DP20	0,20	●
26,9 - 29,0		80	90	21,3	DP20	0,20	●
32,0		85	90	21,3	DP20	0,21	●
33,7		87	90	21,3	DP20	0,22	●
38,1		91	90	21,3	DP20	0,22	●
40,0 - 41,0		93	90	21,3	DP20	0,23	●
42,4		96	90	21,3	DP20	0,23	●
48,3		101	90	21,3	DP20	0,24	●
51,0		104	90	21,3	DP20	0,25	●
52,0 - 53,0		107	90	21,3	DP20	0,25	●
60,3		113	90	21,3	DP20	0,26	●
63,5		116	90	21,3	DP20	0,26	●
70,0		123	90	21,3	DP20	0,27	●
76,1		129	90	21,3	DP20	0,28	●
84,0 - 85,0		137	90	21,3	DP20	0,30	●
88,9		143	90	21,3	DP20	0,31	●
101,6		155	90	21,3	DP20	0,32	●
104,0		157	90	21,3	DP20	0,34	●
114,3		167	95	21,3	DP20	0,37	●
129,0		182	115	21,3	DP20	0,39	●
139,7		193	119	21,3	DP20	0,40	●
154,0		207	127	21,3	DP20	0,45	●
168,3		221	134	21,3	DP20	0,49	●
204,0		257	152	21,3	DP20	0,53	●
219,1		257	160	21,3	DP20	0,57	●
254,0		307	177	21,3	DP20	0,66	●

● = voorraad

● = stock



## Pijpbeugels, zadeltipe met lang rondstaf

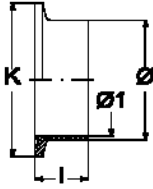
Pipe clip, saddle type with long round bar



OD mm	B	H	ØS	Art. no.	Kg / pc	4301	4404
10,2	60	155	8,0	DP30		○	
12,0 - 13,5	62	156	8,0	DP30		○	
17,0 - 18,0	68	158	8,0	DP30		○	
19,0	68	160	8,0	DP30		○	
21,3 - 23,0	72	150	21,3	DP30		●	
25,0	78	150	21,3	DP30		●	
26,9 - 29,0	80	150	21,3	DP30		●	
32,0	85	150	21,3	DP30		●	
33,7	87	150	21,3	DP30		●	
38,1	91	150	21,3	DP30		●	
40,0 - 41,0	93	150	21,3	DP30		●	
42,4	96	150	21,3	DP30		●	
48,3	101	150	21,3	DP30		●	
51,0	104	150	21,3	DP30		●	
52,0 - 53,0	107	150	21,3	DP30		●	
60,3	113	150	21,3	DP30		●	
63,5	116	150	21,3	DP30		●	
70,0	123	150	21,3	DP30		●	
76,1	129	150	21,3	DP30		●	
84,0 - 85,0	137	150	21,3	DP30		●	
88,9	143	150	21,3	DP30		●	
101,6	155	150	21,3	DP30		●	
104,0	157	150	21,3	DP30		●	
114,3	167	150	21,3	DP30		○	
129,0	182	150	21,3	DP30		○	

● = voorraad

○ = stock



## Clamp, laspuntstuk

### Clamp, liner

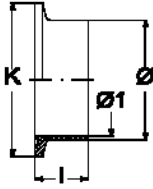
DS/SMS3008, ISO2852, BS4825-3, DIN32676, ISO1127



Ø mm	Wall	Type	L	K	Ø1	Art. no.	Kg / pc	4301	4404
6,0	1,0	mini	21,5	25,4	4,0	DC14	0,02		●
6,4	1,6	1/4" mini	21,5	25,4	3,1	DC14	0,02		●
8,0	1,0	mini	21,5	25,4	6,0	DC14	0,02		●
9,5	1,6	3/8" mini	21,5	25,4	6,3	DC14	0,02		●
10,0	1,0	mini	21,5	25,4	8,0	DC14	0,02		●
12,0	1,0	mini	21,5	25,4	10,0	DC14	0,02		●
12,7	1,6	1/2" mini	21,5	25,4	9,5	DC14	0,02		●
13,0	1,5	DN10 DIN-II	18,0	34,0	10,0	DC12	0,06		●
13,5	1,6	mini	21,5	25,4	10,3	DC14	0,02		●
13,5	1,6	DN8 ISO1127	21,5	34,0	10,3	DC13	0,06		●
13,5	1,6	DN8 ISO1127	21,5	50,5	10,3	DC13	0,07		●
14,0	1,0	mini	21,5	25,4	12,0	DC14	0,02		●
16,0	1,0	mini	21,5	25,4	14,0	DC14	0,02		●
17,2	1,6	mini	21,5	25,4	14,0	DC14	0,02		●
17,2	1,6	DN10 ISO1127	21,5	34,0	14,0	DC13	0,06		●
17,2	1,6	DN10 ISO1127	21,5	50,5	14,0	DC13	0,07		●
18,0	1,0	mini	21,5	25,4	16,0	DC14	0,02		●
19,0	1,5	DN15 DIN-II	18,0	34,0	16,0	DC12	0,06		●
19,1	1,6	3/4" mini	21,5	25,4	15,9	DC14	0,02		●
21,3	1,6	DN15 ISO1127	21,5	34,0	18,1	DC13	0,06		●
21,3	1,6	DN15 ISO1127	21,5	50,5	18,1	DC13	0,07		●
23,0	1,5	DN20 DIN-II	18,0	34,0	20,0	DC12	0,06		●
25,0	1,2	1" DS/SMS	21,5	50,5	22,6	DC10	0,07		●
25,6	1,7	1" BS4825-3	21,5	50,5	22,2	DC15	0,08		●
25,6	1,5	1" ISO2852	21,5	50,5	22,6	DC11	0,07		●
26,9	2,0	DN20 ISO1127	21,5	50,5	22,9	DC13	0,07		●
29,0	1,5	DN25 DIN-II	21,5	50,5	26,0	DC12	0,07		●
33,7	2,0	DN25 ISO1127	21,5	50,5	29,7	DC13	0,07		●
35,0	1,5	DN32 DIN-II	21,5	50,5	32,0	DC12	0,06		●
41,0	1,5	DN40 DIN-II	21,5	50,5	38,0	DC12	0,06		●
42,4	2,0	DN32 ISO1127	21,5	64,0	38,4	DC13	0,08		●
48,3	2,0	DN40 ISO1127	21,5	64,0	44,3	DC13	0,08		●
51,0	1,2	2" DS/SMS	21,5	64,0	48,6	DC10	0,08		●
51,1	1,7	2" BS4825-3	21,5	64,0	47,6	DC15	0,08		●
51,6	1,5	2" ISO2852	21,5	64,0	48,6	DC11	0,08		●
53,0	1,5	DN50 DIN-II	21,5	64,0	50,0	DC12	0,08		●
60,3	2,0	DN50 ISO1127	21,5	77,5	56,3	DC13	0,10		●
63,5	1,6	2½" DS/SMS	21,5	77,5	60,3	DC10	0,10		●
63,8	1,7	2½" BS4825-3	21,5	77,5	60,3	DC15	0,10		●
64,1	1,9	2½" ISO2852	21,5	77,5	60,3	DC11	0,10		●
70,0	2,0	DN65 DIN	28,0	91,0	66,0	DC12	0,17		●
76,1	1,6	3" DS/SMS	21,5	91,0	72,9	DC10	0,17		●

● = voorraad

● = stock



## Clamp, laspuntstuk

### Clamp, liner

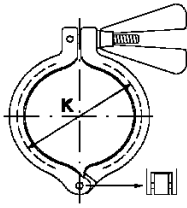
DS/SMS3008, ISO2852, BS4825-3, DIN32676, ISO1127



Ø mm	Wall	Type	I	K	Ø1	Art. no.	Kg / pc	4301	4404
76,5	1,7	3" BS4825-3	21,5	91,0	73,0	DC15	0,17		●
76,7	1,9	3" ISO2852	21,5	91,0	72,9	DC11	0,17		●
85,0	2,0	DN80 DIN	28,0	106,0	81,0	DC12	0,20		●
88,9	2,0	DN80 ISO1127	21,5	106,0	84,9	DC13	0,20		●
101,6	2,0	4" DS/SMS	21,5	119,0	97,6	DC10	0,24		●
101,9	2,1	4" BS4825-3	21,5	119,0	97,6	DC15	0,24		●
102,5	2,5	4" ISO2852	21,5	119,0	97,6	DC11	0,24		●
104,0	2,0	DN100 DIN	28,0	119,0	100,0	DC12	0,24		●
114,3	2,0	DN100 ISO1127	28,0	130,0	110,3	DC13	0,30		●
129,0	2,0	DN125 / 5" DIN / ISO	28,0	144,0	125,0	DC12	0,45		●
129,0	2,0	DN125 DIN	28,0	155,0	125,0	DC12	0,47		●
139,7	2,0	DN125 ISO1127	28,0	155,0	135,7	DC13	0,42		●
154,0	2,0	DN150 / 6" DIN / ISO	28,0	167,0	150,0	DC12	0,50		●
154,0	2,0	DN150 DIN	28,0	183,0	150,0	DC12	0,55		●
168,3	2,6	DN150 ISO1127	28,0	183,0	163,1	DC13	0,50		●
204,0	2,0	DN200 / 8" DIN / ISO	28,0	218,0	200,0	DC12	0,70		●
204,0	2,0	DN200 DIN	28,0	233,5	200,0	DC12	0,75		●
219,1	2,6	DN200 ISO1127	28,0	233,5	213,9	DC13	0,85		●
254,0	2,0	DN250 / 10" DIN / ISO	28,0	268,0	250,0	DC12	0,90		●
273,0	2,6	DN250 ISO1127	28,0	286,1	267,8	DC13	0,95		●
304,0	2,0	DN300 / 12" DIN / ISO	28,0	319,0	300,0	DC12	1,10		●

● = voorraad

● = stock



**Clamp**  
Clamp



OD mm	DIN [DN]	Type	K	Bar max	Art. no.	Kg / pc	4301	4404
6,0 - 18,0		mini S	25,0	50	DC30	0,13	●	
13,0 - 23,0	10 - 20	S	34,0	50	DC30	0,17	●	
25,0 - 38,0	25 - 40	1" - 1½" S	50,5	50	DC30	0,21	●	●
25,0 - 38,0	25 - 40	1" - 1½" T	50,5	10	DC34	0,21	●	
25,0 - 38,0	25 - 40	1" - 1½" SSH	50,5	100	DC32	0,66	●	
25,4 - 38,0	25 - 40	1" - 1½" SSL	50,5	10	DC33	0,13	●	
51,0	50	2" S	64,0	50	DC30	0,25	●	●
51,0	50	2" T	64,0	10	DC34	0,25	●	
51,0	50	2" SSH	64,0	100	DC32	0,82	●	
51,0	50	2" SSL	64,0	10	DC33	0,15	●	
63,5		2½" S	77,5	50	DC30	0,35	●	●
63,5		2½" T	77,5	10	DC34	0,35	●	
63,5		2½" SSH	77,5	90	DC32	0,94	●	
63,5		2½" SSL	77,5	10	DC33	0,17	●	
76,1	65	3" S	91,0	40	DC30	0,42	●	●
76,1	65	3" T	91,0	10	DC34	0,42	●	
76,1	65	3" SSH	91,0	80	DC32	1,02	●	
76,1	65	3" SSL	91,0	10	DC33	0,18	●	
85,0	80	S	106,0	40	DC30	0,44	●	
101,6	100	4" S	119,0	40	DC30	0,51	●	●
101,6	100	4" T	119,0	10	DC34	0,51	●	
101,6	100	4" SSH	119,0	60	DC32	1,27	●	
101,6	100	4" SSL	119,0	10	DC33	0,19	●	
114,3		4½" S	130,0	30	DC30	0,60	●	
129,0		5" SH	144,0	25	DC31	0,75	●	
139,0	125	5½" SH	155,0	20	DC31	1,39	●	
154,0		6" S	167,0	18	DC30	0,88	●	
168,0	150	6 5/8" SH	183,0	15	DC31	1,61	●	
168,0	150	6 5/8" SSH	183,0	40	DC32	2,11	●	
204,0		8" SH	218,0	12	DC31	2,11	●	
219,0	200	8 5/8" SH	233,0	10	DC31	2,25	●	
254,0		10" SH	268,0	8	DC31	2,78	●	
273,0	250	SH	286,1	7	DC31	3,05	●	
304,0		12" SH	319,0	7	DC31	3,69	●	

● = voorraad

● = stock



## Clamp dichtring

Clamp gasket

FDA



OD mm	Wall	Type		Ø1	K	Art. no.	EPDM	NBR	Viton	PTFE EPDM	PTFE Solid
6,0	1,0		mini	4,0	25,4	DC44	●		●		●
6,4	1,6	1/4"	mini	3,1	25,4	DC44	●		●		●
8,0	1,0		mini	6,0	25,4	DC44	●		●		●
9,5	1,6	3/8"	mini	6,3	25,4	DC44	●		●		●
10,0	1,0		mini	8,0	25,4	DC44	●		●		●
12,0	1,0		mini	10,0	25,4	DC44	●		●		●
12,7	1,6	1/2"	mini	9,5	25,4	DC44	●		●		●
13,0	1,5	DN10	DIN-II	10,0	34,0	DC42	●	●	●		
13,5	1,6		mini	10,3	25,4	DC44	●		●		●
13,5	1,6	DN8	ISO1127	10,3	34,0	DC43	●		●		●
13,5	1,6	DN8	ISO1127	10,3	50,5	DC43	●		●		●
14,0	1,0		mini	12,0	25,4	DC44	●		●		●
16,0	1,0		mini	14,0	25,4	DC44	●		●		●
17,2	1,6		mini	14,0	25,4	DC44	●		●		●
17,2	1,6	DN10	ISO1127	14,0	34,0	DC43	●		●		●
17,2	1,6	DN10	ISO1127	14,0	50,5	DC43	●		●		●
18,0	1,0		mini	16,0	25,4	DC44	●		●		●
19,0	1,5	DN15	DIN-II	16,0	34,0	DC42	●	●	●		
19,1	1,6	3/4"	mini	15,9	25,4	DC44	●		●		●
21,3	1,6	DN15	ISO1127	18,1	34,0	DC43	●		●		●
21,3	1,6	DN15	ISO1127	18,1	50,5	DC43	●		●		●
23,0	1,5	DN20	DIN-II	20,0	34,0	DC42	●	●	●		
25,0	1,2	1"	DS/SMS	22,6	50,5	DC40	●	●	●	●	●
25,6	1,7	1"	BS4825-3	22,2	50,5	DC40	●	●	●	●	●
25,6	1,5	1"	ISO2852	22,6	50,5	DC40	●	●	●	●	●
26,9	2,0	DN20	ISO1127	22,9	50,5	DC43	●		●		●
29,0	1,5	DN25	DIN-II	26,0	50,5	DC42	●	●	●		
33,7	2,0	DN25	ISO1127	29,7	50,5	DC43	●		●		●
35,0	1,5	DN32	DIN-II	32,0	50,5	DC42	●	●	●		
41,0	1,5	DN40	DIN-II	38,0	50,5	DC42	●	●	●		
42,4	2,0	DN32	ISO1127	38,4	64,0	DC43	●		●		●
48,3	2,0	DN40	ISO1127	44,3	64,0	DC43	●		●		●
51,0	1,2	2"	DS/SMS	48,6	64,0	DC40	●	●	●	●	●
51,1	1,7	2"	BS4825-3	47,6	64,0	DC40	●	●	●	●	●
51,6	1,5	2"	ISO2852	48,6	64,0	DC40	●	●	●	●	●
53,0	1,5	DN50	DIN-II	50,0	64,0	DC42	●	●	●		
60,3	2,0	DN50	ISO1127	56,3	77,5	DC43	●		●		●
63,5	1,6	2½"	DS/SMS	60,3	77,5	DC40	●	●	●	●	●
63,8	1,7	2½"	BS4825-3	60,3	77,5	DC40	●	●	●	●	●
64,1	1,9	2½"	ISO2852	60,3	77,5	DC40	●	●	●	●	●
70,0	2,0	DN65	DIN	66,0	91,0	DC42	●	●	●		
76,1	1,6	3"	DS/SMS	72,9	91,0	DC40	●	●	●	●	●
76,5	1,7	3"	BS4825-3	73,0	91,0	DC40	●	●	●	●	●
76,7	1,9	3"	ISO2852	72,9	91,0	DC40	●	●	●	●	●
85,0	2,0	DN80	DIN	81,0	106,0	DC42	●	●	●		

● = voorraad

● = stock



## Clamp dichtring

Clamp gasket

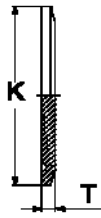
FDA



OD mm	Wall	Type		Ø1	K	Art. no.	EPDM	NBR	Viton	PTFE EPDM	PTFE Solid
88,9	2,0	DN80	ISO1127	84,9	106,0	DC43	●		●		●
101,6	2,0	4"	DS/SMS	97,6	119,0	DC40	●	●	●	●	●
101,9	2,1	4"	BS4825-3	97,6	119,0	DC40	●	●	●	●	●
102,5	2,5	4"	ISO2852	97,6	119,0	DC40	●	●	●	●	●
104,0	2,0	DN100	DIN	100,0	119,0	DC42	●	●			
114,3	2,0	DN100	ISO1127	110,3	130,0	DC43	●				●
129,0	2,0	DN125 / 5"	DIN / ISO	125,0	144,0	DC42	●				
129,0	2,0	DN125	DIN	125,0	155,0	DC42	●				
139,7	2,0	DN125	ISO1127	135,7	155,0	DC43	●		●		
154,0	2,0	DN150 / 6"	DIN / ISO	150,0	167,0	DC42	●				
154,0	2,0	DN150	DIN	150,0	183,0	DC42	●				
168,3	2,6	DN150	ISO1127	163,1	183,0	DC43	●				
204,0	2,0	DN200 / 8"	DIN / ISO	200,0	218,0	DC42	●				
204,0	2,0	DN200	DIN	200,0	233,5	DC42	●				
219,1	2,6	DN200	ISO1127	213,9	233,5	DC43	●				
254,0	2,0	DN250 / 10"	DIN / ISO	250,0	268,0	DC42	●				
273,0	2,6	DN250	ISO1127	267,8	286,1	DC43	●				
304,0	2,0	DN300 / 12"	DIN / ISO	300,0	319,0	DC42	●				

● = voorraad

● = stock



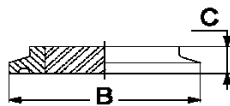
## Blindpuntstuk

Clamp blank

EN 10204 3.1



OD mm	DIN [DN]	Type	K	T	Art. no.	Kg / pc	4301	4404
6,0 - 18,0		mini	25,0	5,6	DC22	0,02		●
13,0 - 23,0	10 - 20		34,0	6	DC22	0,06		●
25,0 - 38,0	25 - 40	1" - 1½"	50,5	7	DC22	0,08		●
51,0	50	2"	64,0	7	DC22	0,14		●
63,5		2½"	77,5	7	DC22	0,21		●
76,1	65	3"	91,0	7	DC22	0,30		●
85,0	80		106,0	7	DC22	0,42		●
101,6	100	4"	119,0	9	DC22	0,65		●
114,3		4½"	130,0	9	DC22	0,77		●
129,0		5"	144,0	10	DC22	1,10		●
139,0	125	5½"	155,0	10	DC22	1,31		●
154,0		6"	167,0	10	DC22	1,63		●
168,0	150	6 5/8"	183,0	10	DC22	1,94		●
204,0		8"	218,0	10	DC22	2,77		●
219,0	200	8 5/8"	233,0	10	DC22	3,21		●
254,0		10"	268,0	10	DC22	4,28		●
273,0	250		286,1	10	DC22	4,55		●
304,0		12"	319,0	10	DC22	4,92		●



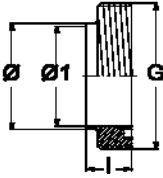
## Kijkglas

Clamp sight glass

EN 10204 3.1



OD [mm]	DIN [DN]	Type	B	C	Max bar	Art. no.	Kg / pc	4462
25,0 - 38,0	25 - 40	1" - 1½"	50,5	8	16	DC21	0,08	●
51,0	50	2"	64,0	10	16	DC21	0,14	●
63,5		2½"	77,5	10	10	DC21	0,21	●
76,1	65	3"	91,0	10	10	DC21	0,30	●
101,6	100	4"	119,0	12	10	DC21	0,65	●



## Lasdraadstuk

### Union male part

DS, SMS, IDF, RJT, DIN 11851, ISO 1127b

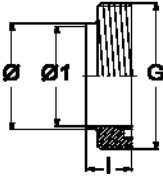
EN 10204 3.1



Ø mm	Wall	Type	l	G	Ø1	Art. no.	Kg / pc	4301 4307	4404
17,2	1,60	DN 10 SC ISO	21,0	28,0	10,0	DJ10	0,03	○	○
19,0	1,50	DN 15 SC	21,0	34,0	16,0	DN10	0,02	●	●
21,3	1,60	DN 15 SC ISO	21,0	34,0	18,1	DJ10	0,04	●	●
23,0	1,50	DN 20 SC	24,0	44,0	20,0	DN10	0,04	●	●
25,4	1,45	1" DS	18,5	44,0	22,5	DD10	0,09		●
25,6	1,50	1" SMS	15,0	40,0	22,6	DS10	0,09		●
25,4	1,65	1" IDF	21,5		22,1	DI10	0,09		●
25,4	1,65	1" RJT	27,0		22,1	DG10	0,09		●
25,4	1,25	1" DIN-Inch	29,0	52,0	22,1	DH10	0,14	●	●
26,9	1,60	DN 20 SC ISO	24,0	44,0	23,7	DJ10	0,08	●	●
29,0	1,50	DN 25 SC	29,0	52,0	26,0	DN10	0,10	●	●
33,7	2,00	DN 25 SC ISO	29,0	52,0	29,7	DJ10	0,11	●	●
35,0	1,50	DN 32 SC	32,0	58,0	32,0	DN10	0,09	●	●
38,4	1,45	1½" DS	20,0	58,0	35,5	DD10	0,14		●
38,6	1,50	1½" SMS	20,0	60,0	35,6	DS10	0,14		●
38,1	1,65	1½" IDF	21,5		34,8	DI10	0,14		●
38,1	1,65	1½" RJT	27,0		34,8	DG10	0,14		●
38,1	1,65	1½" DIN-Inch	33,0	65,0	34,8	DH10	0,21	●	●
41,0	1,50	DN 40 SC	33,0	65,0	38,0	DN10	0,16		●
42,4	2,00	DN 32 SC ISO	32,0	58,0	38,4	DJ10	0,14	●	●
48,3	2,00	DN 40 SC ISO	33,0	65,0	44,3	DJ10	0,19	●	●
51,4	1,45	2" DS	20,0	72,0	48,5	DD10	0,22		●
51,6	1,50	2" SMS	20,0	70,0	48,6	DS10	0,22		●
50,8	1,65	2" IDF	21,5		47,5	DI10	0,22		●
50,8	1,65	2" RJT	27,0		47,5	DG10	0,22		●
50,8	1,65	2" DIN-Inch	35,0	78,0	47,5	DH10	0,28	●	●
53,0	1,50	DN 50 SC	35,0	78,0	50,0	DN10	0,22	●	●
60,3	2,00	DN 50 SC ISO	35,0	78,0	56,3	DJ10	0,25	●	●
63,9	1,70	2½" DS	24,0	88,0	60,5	DD10	0,34		●
64,1	1,90	2½" SMS	24,0	85,0	60,3	DS10	0,34		●
63,5	1,65	2½" IDF	21,5		60,2	DI10	0,34		●
63,5	1,65	2½" RJT	27,0		60,2	DG10	0,34		●
63,5	1,65	2½" DIN-Inch	40,0	95,0	60,2	DH10	0,47	●	●
70,0	2,00	DN 65 SC	40,0	95,0	66,0	DN10	0,36	●	●

● = voorraad  
○ = af fabriek

● = stock  
○ = ex works



## Lasdraadstuk

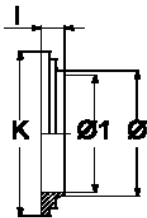
### Union male part

DS, SMS, IDF, RJT, DIN 11851, ISO 1127b

EN 10204 3.1



Ø mm	Wall	Type		I	G	Ø1	Art. no.	Kg / pc	4301 4307	4404
76,1	1,65	3"	DIN-Inch	40,0	95,0	72,8	DH10	0,45	●	●
76,1	2,00	DN 65	SC ISO	40,0	95,0	72,1	DJ10	0,37	●	●
76,2	1,65	3"	IDF	21,5		72,9	DI10	0,43		●
76,2	1,65	3"	RJT	27,0		72,9	DG10	0,43		●
76,4	2,20	3"	DS	24,0	100,0	72,0	DD10	0,43		●
76,7	1,90	3"	SMS	24,0	98,0	72,9	DS10	0,43		●
85,0	2,00	DN 80	SC	45,0	110,0	81,0	DN10	0,56	●	●
88,9	2,00	DN 80	SC ISO	45,0	110,0	84,3	DJ10	0,56	●	●
102,0	2,20	4"	DS	24,0	130,0	97,6	DD10	0,72		●
102,5	2,45	4"	SMS	35,0	132,0	97,6	DS10	0,95		●
101,6	2,00	4"	IDF	30,0		97,6	DI10	0,73		●
101,6	2,00	4"	RJT	27,0		97,6	DG10	0,73		●
101,6	2,00	4"	DIN-Inch	54,0	130,0	97,6	DH10	1,02	●	●
104,0	2,00	DN100	SC	54,0	130,0	100,0	DN10	0,64		●
114,3	2,00	DN100	SC ISO	54,0	130,0	109,7	DJ10	0,81	●	●
129,0	2,00	DN125	SC	46,0	160,0	125,0	DN10	0,92	○	○
139,7	2,00	DN125	SC ISO	46,0	160,0	134,5	DJ10	1,13	○	○
154,0	2,00	DN150	SC	50,0	190,0	150,0	DN10	1,55	○	○
168,3	2,00	DB150	SC ISO	50,0	190,0	163,1	DJ10	1,77	○	○



## Laspuntstuk

### Union liner

DS, SMS, IDF, RJT, DIN 11851, ISO 1127b

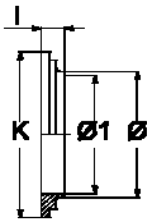
EN 10204 3.1



Ø mm	Wall	Type		I	K	Ø1	Art. no.	Kg / pc	4301 4307	4404
17,2	1,60	DN 10	SD ISO	17,0	22,5	14,0	DJ20	0,01	○	○
19,0	1,50	DN 15	SD	17,0	28,5	16,0	DS20	0,03	●	●
21,3	1,60	DN 15	SD ISO	17,0	28,5	18,1	DJ20	0,02	●	●
23,0	1,50	DN 20	SD	18,0	36,5	20,0	DS20	0,06	●	●
25,4	1,45	1"	DS	11,0	40,0	22,5	DD20	0,02		●
25,6	1,50	1"	SMS	7,5	35,5	22,6	DS20	0,02		●
25,4	1,65	1"	IDF	21,5		22,1	DI20	0,02		●
25,4	1,65	1"	RJT	19,5		22,1	DG20	0,02		●
25,4	1,25	1"	DIN-Inch	22,0	44,0	22,1	DH20	0,10	●	●
26,9	1,60	DN 20	SD ISO	18,0	36,5	23,7	DJ20	0,04	●	●
29,0	1,50	DN25	SD	22,0	44,0	26,0	DN20	0,08	●	●
33,7	2,00	DN 25	SD ISO	22,0	44,0	29,7	DJ20	0,07	●	●
35,0	1,50	Dn 32	SD	25,0	50,0	32,0	DN20	0,11	●	●

● = voorraad  
○ = af fabriek

● = stock  
○ = ex works



## Laspuntstuk

### Union liner

DS, SMS, IDF, RJT, DIN 11851, ISO 1127b

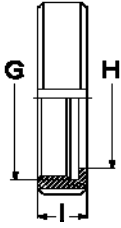
EN 10204 3.1



Ø mm	Wall	Type	l	K	Ø1	Art. no.	Kg / pc	4301 4307	4404
38,1	1,65	1½" IDF	21,5		34,8	DI20	0,04		●
38,1	1,65	1½" RJT	19,5		34,8	DG20	0,04		●
38,1	1,65	1½" IN-Inch	26,0	56,0	34,8	DH20	0,15	●	●
38,4	1,45	1½" DS	11,0	54,0	35,5	DD20	0,04		●
38,6	1,50	1½" SMS	9,0	55,0	35,6	DS20	0,04		●
41,0	1,50	DN 40 SD	26,0	56,0	38,0	DN20	0,13	●	●
42,4	2,00	DN 32 ðD ISO	25,0	50,0	38,4	DJ20	0,11	●	●
48,3	2,00	DN 40 ðD ISO	26,0	56,0	44,3	DJ20	0,13	●	●
51,4	1,45	2" DS	11,0	68,0	48,5	DD20	0,05		●
51,6	1,50	2" SMS	9,0	65,0	48,6	DS20	0,05		●
50,8	1,65	2" IDF	21,5		47,5	DI20	0,05		●
50,8	1,65	2" RJT	19,5		47,5	DG20	0,05		●
50,8	1,65	2" IN-Inch	26,0	68,0	47,5	DH20	0,21	●	●
53,0	1,50	DN 50 SD	28,0	68,0	50,0	DN20	0,18	●	●
60,3	2,00	DN 50 ðD ISO	28,0	68,5	56,3	DJ20	0,19	●	●
63,9	1,70	2½" DS	12,0	84,0	60,5	DD20	0,10		●
64,1	1,90	2½" SMS	9,0	80,0	60,3	DS20	0,10		●
63,5	1,65	2½" IDF	21,5		60,2	DI20	0,10		●
63,5	1,65	2½" RJT	19,5		60,2	DG20	0,10		●
63,5	1,65	2½" IN-Inch	28,0	86,0	60,2	DH20	0,37	●	●
70,0	2,00	DN 65 SD	32,0	86,0	66,0	DN20	0,33	●	●
76,1	1,65	3" IN-Inch	32,0	86,0	72,8	DH20	0,39	●	●
76,1	2,00	DN 65 ðD ISO	32,0	86,0	72,1	DJ20	0,29	●	●
76,2	1,65	3" IDF	21,5		72,9	DI20	0,12		●
76,2	1,65	3" RJT	19,5		72,9	DG20	0,12		●
76,4	2,20	3" DS	12,0	96,0	72,0	DD20	0,12		●
76,7	1,90	3" SMS	10,0	93,0	72,9	DS20	0,12		●
85,0	2,00	DN 80 SD	37,0	100,0	81,0	DN20	0,50	●	●
88,9	2,00	DN 80 ðD ISO	37,0	100,0	84,3	DJ20	0,36	●	●
102,0	2,20	4" DS	12,0	124,0	97,6	DD20	0,26		●
102,5	2,45	4" SMS	12,0	127,0	97,6	DS20	0,26		●
101,6	2,00	4" IDF	30,0		97,6	DI20	0,26		●
101,6	2,00	4" RJT	19,5		97,6	DG20	0,26		●
101,6	2,00	4" IN-Inch	44,0	121,0	97,6	DH20	0,82	●	●
104,0	2,00	DN100 SD	44,0	120,0	100,0	DN20	0,67		●
114,3	2,00	DN100 ðD ISO	44,0	121,0	109,7	DJ20	0,67	●	●
129,0	2,00	DN125 SD	34,0	150,0	132,0	DN20	0,08	○	○
139,7	2,00	DN125 ðD ISO	34,0	150,0	134,5	DJ20	0,76	○	○
154,0	2,00	DN150 SD	37,0	176,0	157,0	DN20	1,04	○	○
168,3	2,00	DN150 ðD ISO	37,0	176,0	163,1	DJ20	1,03	○	○

● = voorraad  
○ = af fabriek

● = stock  
○ = ex works



## Union wartel

### Union nut

DS, SMS, IDF, RJT, DIN 11851, ISO 1127b

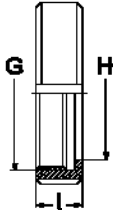
EN 10204 3.1



OD mm	Wall	Type		I	G	H	Art. no.	Kg / pc	4301 4307	4404
17,2	1,60	DN 10	DIN	18,0	28,0	19,0	DN30	0,07	○	○
19,0	1,50	DN 15	DIN	18,0	34,0	25,0	DI30	0,08	●	●
21,3	1,60	DN 15	DIN	20,0	34,0	25,0	DN30	0,13	●	●
23,0	1,50	DN 20	DIN	21,0	44,0	31,0	DI30	0,13	●	●
25,6	1,50	1"	SMS	19,0	40,0	32,5	DS30	0,16	●	
25,4	1,65	1"	IDF	30,0	34,3	30,5	DI30	0,16	●	
25,4	1,65	1"	RJT	22,2	42,3	33,5	DG30	0,16	●	
25,4	1,25	1"	DIN-Inch	21,0	52,0	36,0	DN30	0,16	●	●
26,9	1,60	DN 20	DIN	21,0	44,0	31,0	DN30	0,13	●	●
29,0	1,50	DN 25	DIN	21,0	52,0	36,0	DN30	0,16	●	●
33,7	2,00	DN 25	DIN	21,0	52,0	36,0	DN30	0,16	●	●
35,0	1,50	DN 32	DIN	21,0	58,0	43,5	DN32	0,22	●	●
38,4	1,45	1½"	DS	20,0	58,0	48,5	DD30	0,22	●	
38,6	1,50	1½"	SMS	23,0	60,0	48,5	DS30	0,22	●	
38,1	1,65	1½"	IDF	30,0	47,9	43,5	DI30	0,22	●	
38,1	1,65	1½"	RJT	22,2	55,0	46,0	DG30	0,22	●	
38,1	1,50	1½"	DIN-Inch	21,0	65,0	49,0	DN30	0,24	●	●
41,0	1,50	DN 40	DIN	21,0	65,0	49,0	DN30	0,24	●	●
42,4	2,00	DN 32	DIN	21,0	58,0	43,5	DN30	0,22	●	●
48,3	2,00	DN 40	DIN	21,0	65,0	49,0	DN30	0,25	●	●
51,4	1,45	2"	DS	22,0	72,0	62,5	DD30	0,31	●	
51,6	1,50	2"	SMS	24,0	70,0	61,0	DS30	0,31	●	
50,8	1,65	2"	IDF	30,0	61,4	57,0	DI30	0,31	●	
50,8	1,65	2"	RJT	22,2	67,9	58,7	DG30	0,31	●	
50,8	1,50	2"	DIN-Inch	22,0	78,0	62,0	DN30	0,32	●	●
53,0	1,50	DN 50	DIN	22,0	78,0	62,0	DN30	0,32	●	●
60,3	2,00	DN 50	DIN	22,0	78,0	62,0	DN30	0,32	●	●
63,9	1,70	2½"	DS	24,0	88,0	76,5	DD30	0,45	●	
64,1	1,90	2½"	SMS	28,0	85,0	74,0	DS30	0,45	●	
63,5	1,65	2½"	IDF	30,0	74,9	70,7	DI30	0,45	●	
63,5	1,65	2½"	RJT	22,2	80,6	71,4	DG30	0,45	●	
63,5	1,50	2½"	DIN-Inch	25,0	95,0	80,0	DN30	0,53	●	●
70,0	2,00	DN65	DIN	25,0	95,0	80,0	DN30	0,53	●	●
76,4	2,20	3"	DS	25,0	100,0	88,5	DD30	0,54	●	
76,7	1,90	3"	SMS	30,0	98,0	87,0	DS30	0,54	●	
76,2	1,65	3"	IDF	30,0	88,4	83,3	DI30	0,54	●	
76,2	1,65	3"	RJT	22,2	93,3	84,1	DG30	0,54	●	
76,1	1,50	3"	DIN-Inch	30,0	95,0	82,0	DN30	0,68	●	●
76,1	2,00	DN 65	DIN	25,0	95,0	80,0	DN30	0,53	●	●
85,0	2,00	DN 80	DIN	29,0	110,0	94,0	DN30	0,72	●	
88,9	2,00	DN 80	DIN	29,0		94,0	DN30	0,72	●	●

● = voorraad  
○ = af fabriek

● = stock  
○ = ex works



## Union wartel

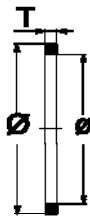
### Union nut

DS, SMS, IDF, RJT, DIN 11851, ISO 1127b

EN 10204 3.1



OD mm	Wall	Type	I	G	H	Art. no.	Kg / pc	4301 4307	4404
102,0	2,20	4" DS	28,0	130,0	117,0	DD30	1,00	●	
102,5	2,45	4" SMS	45,0	132,0	113,0	DS30	1,30	●	
101,6	2,00	4" IDF	34,9	115,4	112,0	DI30	1,20	●	
101,6	2,00	4" RJT	22,2	119,0	109,7	DG30	0,98	●	
101,6	2,00	4" DIN-Inch	31,0	130,0	115,0	DN30	0,97	●	●
104,0	2,00	DN 100 DIN	31,0	130,0	115,0	DN30	0,97	●	●
114,3	2,00	DN 100 DIN	31,0	130,0	115,0	DN30	0,97	●	●
129,0	2,00	DN 125 DIN	35,0	160,0	138,0	DN30	1,45	○	○
139,7	2,00	DN 125 DIN	35,0	160,0	146,0	DN30	1,45	○	○
154,0	2,00	DN 150 DIN	40,0	190,0	164,0	DN30	1,88	○	○
168,3	2,00	DN 150 DIN	40,0	190,0	176,0	DN30	1,88	○	○



## Union dichtring

### Union gasket

DS, SMS, IDF, RJT, DIN 11851, ISO 1127b

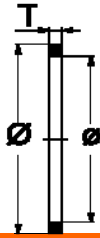
EN 10204 3.1



OD mm	Wall	Type	T	Ø	Ø	Art. no.	EPDM	NBR	Viton
17,2	1,60	DN 10 DIN	4,5	20,0	12,0	DN40	●	●	●
19,0	1,50	DN 15 DIN	4,5	26,0	18,0	DN40	●	●	●
21,3	1,60	DN 15 DIN	4,5	26,0	18,0	DN40	●	●	●
23,0	1,50	DN 20 DIN	4,5	33,0	23,0	DN40	●	●	●
25,4	1,45	1" DS	4,5	32,0	25,0	DD40	●	●	●
25,6	1,50	1" SMS	5,5	32,0	25,0	DS40	●	●	●
25,4	1,65	1" IDF	5,0	32,5	23,6	DI40	●		
25,4	1,65	1" RJT	6,6	39,9	26,7	DG40	●		
25,4	1,25	1" DIN-Inch	5,0	40,0	30,0	DN40	●	●	●
26,9	1,60	DN 20 DIN	4,5	33,0	23,0	DN40	●	●	●
29,0	1,50	DN25 DIN	5,0	40,0	30,0	DN40	●	●	●
33,7	2,00	DN25 DIN	5,0	40,0	30,0	DN40	●	●	●
35,0	1,50	DN 32 DIN	5,0	36,0	46,0	DN40	●	●	●
38,4	1,45	1½" DS	4,5	47,0	38,0	DD40	●	●	●
38,6	1,50	1½" SMS	5,5	48,0	38,0	DS40	●	●	●
38,1	1,65	1½" IDF	5,0	46,0	36,6	DI40	●		
38,1	1,65	1½" RJT	6,6	52,9	39,4	DG40	●		
38,1	1,50	1½" DIN-Inch	5,0	52,0	42,0	DN40	●	●	●
41,0	1,50	DN40 DIN	5,0	52,0	42,0	DN40	●	●	●
42,4	2,00	DN 32 DIN	5,0	36,0	46,0	DN40	●	●	●
48,3	2,00	DN40 DIN	5,0	52,0	42,0	DN40	●	●	●
51,4	1,45	2" DS	4,5	59,0	51,0	DD40	●	●	●
51,6	1,50	2" SMS	5,5	61,0	51,0	DS40	●	●	●

● = voorraad  
○ = af fabriek

● = stock  
○ = ex works



## Union dichtring

### Union gasket

DS, SMS, IDF, RJT, DIN 11851, ISO 1127b

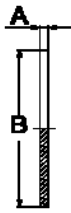
EN 10204 3.1



OD mm	Wall	Type	T	Ø	ø	Art. no.	EPDM	NBR	Viton
50,8	1,65	2" IDF	5,0	59,5	49,6	DI40	●		
50,8	1,65	2" RJT	6,6	65,3	52,1	DG40	●		
50,8	1,50	2" DIN-Inch	5,0	64,0	54,0	DN40	●	●	●
53,0	1,50	DN50 DIN	5,0	64,0	54,0	DN40	●	●	●
60,3	2,00	DN50 DIN	5,0	64,0	54,0	DN40	●	●	●
63,9	1,70	2½" DS	4,5	74,0	63,5	DD40	●	●	●
64,1	1,90	2½" SMS	5,5	73,0	63,5	DS40	●	●	●
63,5	1,65	2½" IDF	5,0	73,2	61,3	DI40	●		
63,5	1,65	2½" RJT	6,6	78,0	64,8	DG40	●		
63,5	1,50	2½" DIN-Inch	5,0	81,0	71,0	DN40	●	●	●
70,0	2,00	DN65 DIN	5,0	81,0	71,0	DN40	●	●	●
76,4	2,20	3" DS	4,5	88,0	76,1	DD40	●	●	●
76,7	1,90	3" SMS	5,5	86,0	76,1	DS40	●	●	●
76,2	1,65	3" IDF	5,0	86,5	73,9	DI40	●		
76,2	1,65	3" RJT	6,6	90,7	77,5	DG40	●		
76,1	1,50	3" DIN-Inch	5,0	81,0	71,0	DN40	●	●	●
76,1	2,00	DN65 DIN	5,0	81,0	71,0	DN40	●	●	●
85,0	2,00	DN80 DIN	5,0	95,0	85,0	DN40	●	●	●
102,0	2,20	4" DS	4,5	112,0	101,6	DD40	●	●	●
102,5	2,45	4" SMS	5,5	114,0	101,6	DS40	●	●	●
101,6	2,00	4" IDF	5,0	112,5	98,6	DI40	●		
101,6	2,00	4" RJT	6,6	116,1	102,9	DG40	●		
101,6	2,00	4" DIN-Inch	5,0	114,0	104,0	DN40	●	●	●
104,0	2,00	DN100 DIN	6,0	114,0	104,0	DN40	●	●	●
114,3	2,00	DN100 DIN	6,0	114,0	104,0	DN40	●	●	●
129,0	2,00	DN125 DIN	7,0	142,0	130,0	DN40	○	○	○
139,7	2,00	DN125 DIN	7,0	142,0	135,0	DJ40	○	○	○
154,0	2,00	DN150 DIN	7,0	114,0	104,0	DN40	○	○	○
168,3	2,00	DN150 DIN	7,0	176,0	164,0	DJ40	○	○	○

● = voorraad  
○ = af fabriek

● = stock  
○ = ex works



## Union blindpuntstuk

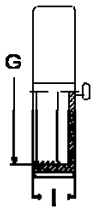
Union blank

DIN 11851

EN 10204 3.1



OD mm	Wall	Type	A	B	Art. no.	Kg / pc	4301	4404
25,4	1,45	1" DS	3,0	40,0	DD22	0,03	●	●
25,6	1,50	1" SMS	3,0	35,5	DS22	0,03	●	●
38,4	1,45	1½" DS	3,0	54,0	DD22	0,05	●	●
38,6	1,50	1½" SMS	3,0	55,0	DS22	0,05	●	●
51,4	1,45	2" DS	3,0	68,0	DD22	0,06	●	●
51,6	1,50	2" SMS	3,0	65,0	DS22	0,06	●	●
63,9	1,70	2½" DS	4,0	84,0	DD22	0,12	●	●
64,1	1,90	2½" SMS	4,0	80,0	DS22	0,12	●	●
76,4	2,20	3" DS	4,0	96,0	DD22	0,15	●	●
76,7	1,90	3" SMS	4,0	93,0	DS22	0,15	●	●
102,0	2,20	4" DS	4,0	124,0	DD22	0,30	●	●
102,5	2,45	4" SMS	4,0	127,0	DS22	0,30	●	●



## Blindwartel

Blind nut

DIN 11851

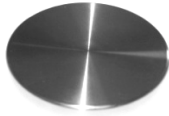
EN 10204 3.1



OD mm	Wall	Type	I	G	Art. no.	Kg / pc	4301 4307	4404
25,4	1,45	1" DS	20,0	44,0	DD32	0,19	●	●
25,6	1,50	1" SMS	19,0	40,0	DS32	0,19	●	●
38,4	1,45	1½" DS	20,0	58,0	DD32	0,29	●	●
38,6	1,50	1½" SMS	23,0	60,0	DS32	0,30	●	●
51,4	1,45	2" DS	22,0	72,0	DD32	0,44	●	●
51,6	1,50	2" SMS	24,0	70,0	DS32	0,44	●	●
63,9	1,70	2½" DS	24,0	88,0	DD32	0,70	●	●
64,1	1,90	2½" SMS	28,0	85,0	DS32	0,70	●	●
76,4	2,20	3" DS	25,0	100,0	DD32	0,90	●	●
76,7	1,90	3" SMS	30,0	98,0	DS32	0,90	●	●
102,0	2,20	4" DS	28,0	130,0	DD32	1,53	●	●
102,5	2,45	4" SMS	45,0	132,0	DS32	1,60	●	●

● = voorraad  
○ = af fabriek

● = stock  
○ = ex works



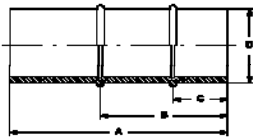
## Laskap

End cap solid



EN 10204 3.1

OD mm	Wall	Type		Art. no.	4301	4404
25,0	1,20	1"	ISO	DE20		●
29,0	1,50	DN25	DIN	DE30		●
38,0	1,20	1½"	ISO	DE20		●
41,0	1,50	DN40	DIN	DE30		●
51,0	1,20	2"	ISO	DE20		●
53,0	1,50	DN50	DIN	DE30		●
63,5	1,60	2½"	ISO	DE20		●
70,0	2,00	DN65	DIN	DE30		●
76,1	1,60	3"	ISO	DE20		●
85,0	2,00	DN80	DIN	DE30		●
101,6	2,00	4"	ISO	DE20		●
104,0	2,00	DN100	DIN	DE30		●



## Slangpilaar

Hoze nozzles



OD mm	Wall	Type		A	Art. no.	Kg / pc	4301	4404
25,0	1,20	1"	ISO	42,0	DM20	0,03		●
38,0	1,20	1½"	ISO	71,0	DM20	0,09		●
51,0	1,20	2"	ISO	101,0	DM20	0,14		●
63,5	1,60	2½"	ISO	116,0	DM20	0,27		●
76,1	1,60	3"	ISO	89,0	DM20	0,35		●



## Hooked C-spanner

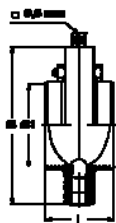
Hooked C-spanner



OD mm	DIN [DN]	Art. no.	Kg / pc	4301	4404
25,0 - 38,1	25 - 40	DM10	0,50	●	
51,0 - 101,6	50 - 100	DM10	0,80	●	

- = voorraad
- = af fabriek

- = stock
- = ex works



## Vlinderklep

Butterfly valve

EN 10204 3.1



Ø mm	Wall	Type	Ø1	I	B	☒	Art. no.	Kg / pc	4301	4404
25,0	1,20	1" ISO	22,6	52,0	40,0	9,5	DV10	1,32		●
38,0	1,60	1½" ISO	34,8	52,0	65,0	9,5	DV10	1,51		●
51,0	1,60	2" ISO	47,8	52,0	65,0	9,5	DV10	1,75		●
63,5	1,60	2½" ISO	60,3	52,0	65,0	9,5	DV10	2,10		●
76,1	1,60	3" ISO	72,9	52,0	65,0	9,5	DV10	4,22		●
101,6	2,00	4" ISO	97,6	52,0	65,0	9,5	DV10	4,82		●

## Dichtring

Gasket



Ø mm	Art. no.	EPDM	NBR	Viton
25,0	DV40	●	●	●
38,0	DV40	●	●	●
51,0	DV40	●	●	●
63,5	DV40	●	●	●
76,1	DV40	●	●	●
101,4	DV40	●	●	●

## Aktuator

Actuator



Ø mm	Art. no.	4301	4404
25,0	DV20	●	
38,0 - 76,1	DV20	●	
101,6	DV20	●	

● = voorraad

● = stock